



YOUR PATH TO SUCCESS

Helston
Community
College

**A remarkable 90% of students are accepted
to their first choice university.**

2025-26



**“I’VE BEEN REALLY WELL SUPPORTED
TO RESEARCH AND APPLY FOR A VERY
COMPETITIVE COURSE AT UNIVERSITY.”**

CONTENTS

Introduction

- 4. Head's welcome
- 6. Why choose us?
- 8. Making the right choices
- 12. High Achievers' Pathway
- 13. Medical Students' Pathway
- 14. Armed Forces' Pathway
- 15. Sports Pathway
- 16. Work Experience
- 17. Enrichment Programme

Level 3 A Levels

- 18. Art & Design Fine Art
- 19. Biology
- 20. Chemistry
- 21. Core Maths
- 22. Drama and Theatre Studies
- 23. Engineering
- 24. English Language and Literature
- 25. English Literature
- 26. Further Mathematics
- 27. Geography
- 28. Geology
- 29. History
- 30. Mathematics
- 31. Media Studies
- 32. Music
- 33. Philosophy
- 34. Photography
- 35. Physics
- 36. Psychology
- 37. Sociology
- 38. Spanish

Level 3 Vocational Courses

- 39. Art Level 3 Diploma
- 40. Business Extended Certificate
- 41. Food Science and Nutrition Diploma
- 42. Health and Social Care
- 43. Early Childhood Development
- 44. Information Technology
- 45. Music Technology Diploma
- 46. Sport and Physical Activity Diploma
- 47. Travel & Tourism Extended Certificate
- 48. WJEC National Diploma in Medical Science

Level 1 & 2 Courses

- 50. Construction Diploma
- 51. English GCSE Resit
- 52. Maths GCSE Resit

Enrichment Programme

- 54. Extended Project Qualification (EPQ)

APPLICATION FORM 55

HOW TO FIND US 56

HEAD'S WELCOME

Helston College's Post-16 Education opens doors to a world of opportunities. How? By helping you gain more than just academic knowledge. Today's world needs more than that.

As a small college, we have time to get to know every student and help them develop all the skills needed to succeed in today's world - confidence, communication, resilience, and problem-solving capabilities.

At Helston, we understand the importance of personalised attention. Our small size ensures that you receive individualised support to help you excel. Whether clarifying complex concepts, exploring various career options, or offering personal mentorship, our dedicated team is committed to guiding and inspiring you on your unique path.

And we value flexibility and choice. That's why we offer diverse academic pathways, from A-levels to diplomas and vocational qualifications, allowing you to pursue what truly excites you. And uniquely, we will enable you to mix course types, so if you want to combine A-levels with vocational courses, we fully support your ambitions. Whatever you want to achieve, we're here to make it happen.

Speaking of achievements, our track record speaks for itself. A staggering 90% of our students receive offers from their first-choice universities, with many securing places at prestigious institutions like Oxford, Cambridge, and other Russell Group universities.

This is more than just due to our students achieving great grades. It's our focus on leadership, confidence, communication and other skills that universities and employers value.

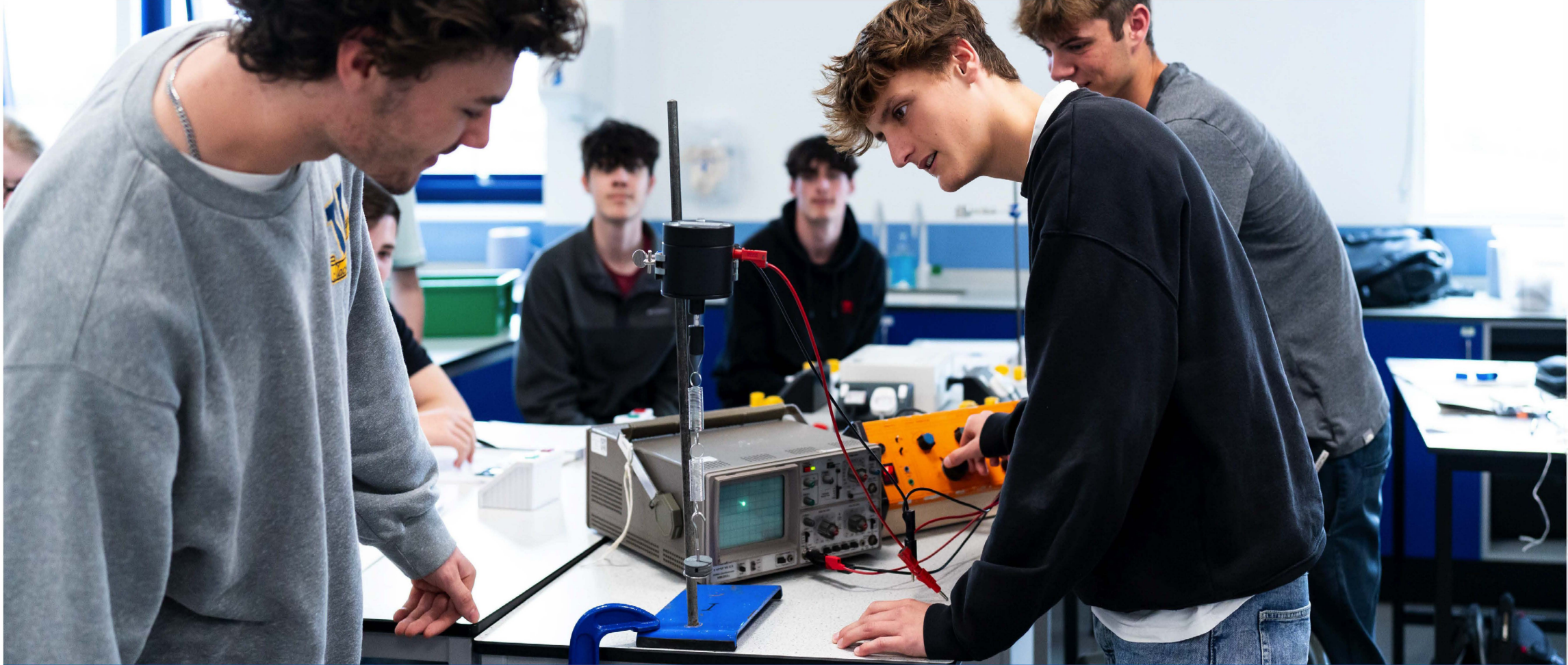
That's also why students heading directly for apprenticeships and employment land incredible placements at leading organisations such as Goonhilly, SERCO, and Francis Clark Accountants. Not only this, but we also take pride in being recognised by the Royal Navy for our exceptional support and guidance for prospective Armed Forces candidates.

Whether your dreams lie in higher education, apprenticeships, or a military career, Helston College is your pathway to success. Your goals become our goals, and we're here to support you every step of the way.

Together, let's turn your aspirations into achievements.

Alex Lingard
Headteacher





“”

The classes at Helston are smaller, so you can have 1 to 1 teaching.

TEGEN

“”

Staff treat you with respect and as people, not students.

BEN

“”

I like Helston because it has a family feel, and we all mix in together.

KANE

WHY CHOOSE US?

Why settle for ordinary when you can choose extraordinary? We believe that extraordinary post-16 education is not just about what you learn. It's how you learn, where you learn, and who you learn it with. That's what makes us different, and that's why we offer:

Personalised Mentoring:

Our dedicated tutor mentors are here to guide you every step of the way. From weekly sessions to independent progression and support meetings, they offer expert advice on your future, career pathways, and university or apprenticeship applications. And because we're a small college, they'll know your strengths and weaknesses, so you'll always have a trusted advisor by your side.

Flexible Timetable:

Everyone learns differently, so we offer a flexible timetable tailored to your subject interests and commitments. You can schedule study sessions at times that suit you best, allowing you to create an optimal learning environment that maximises your potential.

Fully Resourced Study Centre and Library:

Our study centre and library provide a quiet focus and are equipped with state-of-the-art resources to aid your learning. From computers to a wide range of academic materials, you'll have everything you need to excel academically and immerse yourself in a conducive study atmosphere.

Team Spirit:

We believe in the power of collaboration and offer a vibrant array of sports, music, and drama activities. Whether you're an aspiring athlete, a budding musician, or a passionate performer, you'll have ample opportunities to engage in team-based experiences, foster lasting friendships, and unleash your creative talents.

Excellence Pathways

If you're looking to apply for Oxbridge or a Russell Group university, or if you're interested in a medical or armed forces career, we offer help every step of the way. From personalised mentoring sessions to support meetings and work experience, we're here to help you confidently pursue your dreams.

And let's not forget... our Annual Ball!

After a year of dedicated study, it's time to let loose and celebrate your accomplishments. Our highly anticipated Annual Ball is a time-honoured tradition where you can dress up, dance, and create unforgettable memories with your friends. It's the perfect way to unwind and have fun.



TRANSFORMING
EDUCATION:

FREE IPAD FOR EVERY STUDENT

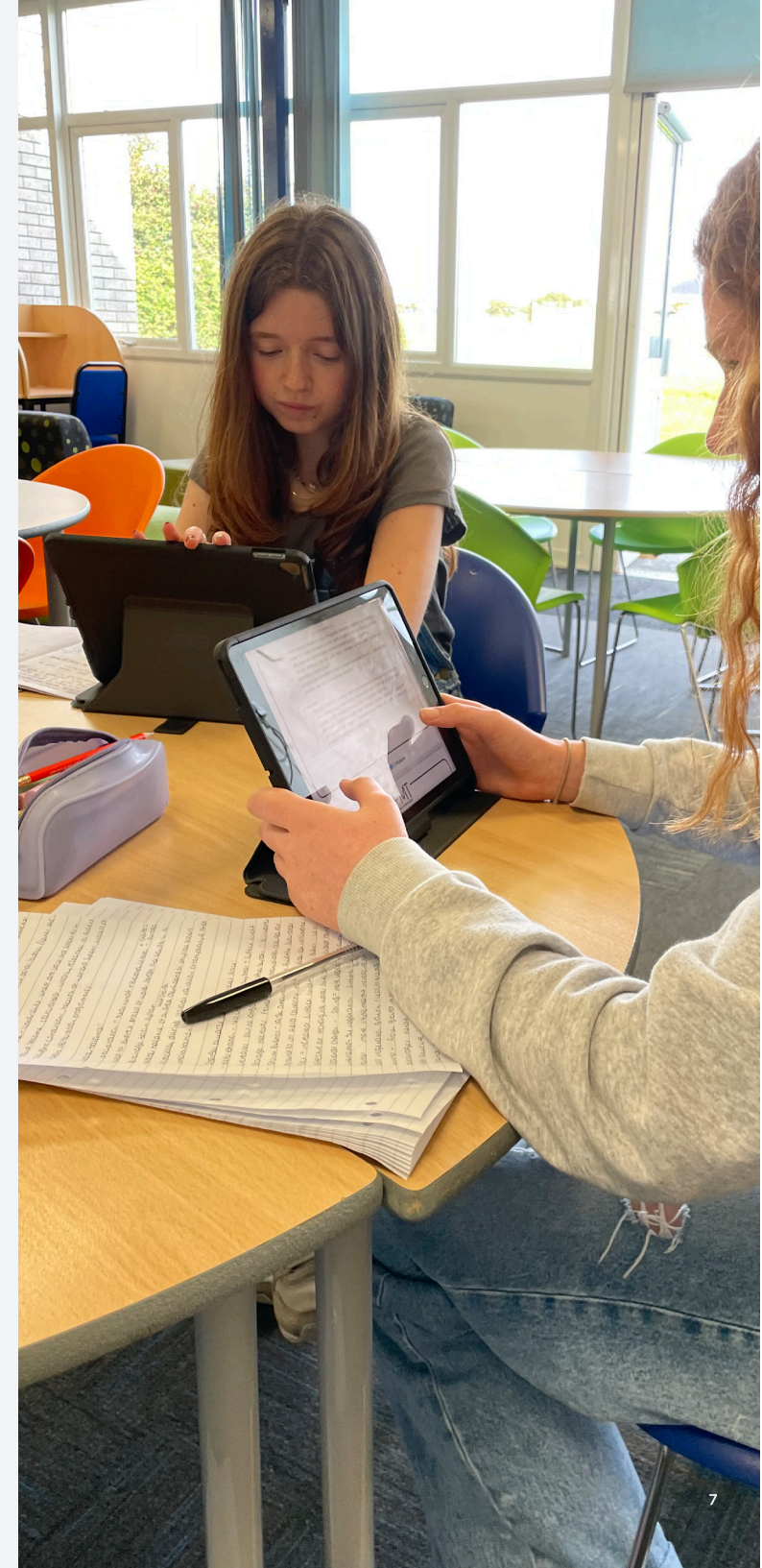
Whatever you choose to study, when you enrol at Helston Community College, you'll be given a FREE iPad for use throughout your time with us. Why? Because we're committed to delivering the best possible learning experience for all - both inside and outside the classroom.

This is about more than improving the way you learn. It's about transforming it. With iPads in the hands of every student, we open doors to a world of educational resources, from textbooks and articles to videos and apps, ensuring everyone has access to learning materials that they need to learn at their own pace in a way that suits them.

And not only this.

But, collaboration and communication are also improved, as iPads facilitate group projects, file sharing, and presentations. It's not just a device; it's your opportunity for personalised education, collaborative teamwork, and limitless possibilities.

Join us in this digital learning journey and unlock the future of education with your FREE iPad at Helston Community College.



WHICH LEVEL SHOULD I CHOOSE?

Making the right choices.

Choosing the right level of study is an important decision on your educational journey. Every student is unique, and we're here to help you find the path that suits you best.

You'll find many answers to the questions you may be asking on these pages. If you have any other questions or want further advice, we're here to help. Just ask.



LEVEL 2

Don't let Maths and English GCSE re-sits get you down. You're not alone - we're here to support you in retaking your exams and achieving success. Also available at Level 2 is our construction course - a gateway to NVQ-level qualifications.

LEVEL 3

If you're looking for an academic challenge and considering Higher Education, the A Level or Level 3 Vocational Courses are ideal for you. These are designed to push your knowledge, skills and understanding to a higher level, preparing you for advanced academic study.

WHAT'S THE DIFFERENCE BETWEEN A-LEVELS AND BTECS?

A-levels and BTECs are both accepted by universities and colleges. The main difference is how they are assessed.

A-levels are more academic and classroom-based. They typically involve two years of study, with assessments at the end of each year. Some A levels, including Art, Music and Engineering, also include coursework components.

BTEC courses are typically more hands-on and practical than A-levels and often involve work experience or other real-world learning opportunities. They have a greater proportion of coursework and practical projects, and although exams are taken, this may not be at the end of the two years.

Some of our courses are larger and equivalent to two A levels. These take twice the time, and students can achieve double grades following the above trend.

PLEASE NOTE:

If you are considering Medicine, Veterinary Science, Dentistry, and/or applying to Oxbridge, you should focus on A-level courses.



What entry qualifications will I need?

Level 2

Interview Required

Level 3 (A Levels)

Grade 4 or above in Maths and English and three additional GCSEs at grade 4 or above.
NB: subject-specific requirements may apply

Level 3 (BTECs)

Four GCSEs at grade 4 or above, including English or Maths

How many courses should I choose?

You can choose three or four courses in your first year. This can include four A-level equivalents or three A-levels plus either core maths or the EPQ. The minimum requirement is equivalent to three A levels.

Under special circumstances, some students may be able to study up to five subjects. However, this is often not recommended due to the heavy workload involved.

What happens if I start a course and then want to change or drop it?

There is some flexibility to enable students to change course choices during the suitability period at the start of the year. After this period, students are expected to commit to the chosen courses.

Can I choose a new course at the end of Year 12?

This depends on the course you are studying. Whilst most students will have decided on a two-year programme, some will review their options at the end of Year 12.

Will I need to go to an interview?

Yes. This is your opportunity to make sure you're choosing the right courses for you and ask any questions.

What happens if I don't get the grades to study my chosen courses?

After you get your results, we will review your grades. If there is any concern, we will arrange a meeting to discuss alternative choices.





"Sixth-form students are very proud to study at the school. They are very positive about the quality of their education. They have many opportunities to enhance their learning through a breadth of visits and activities. They value the expertise of staff in preparing them for higher education, apprenticeships and work."

OFSTED 2022



HIGH ACHIEVERS' PATHWAY

The road to Oxford, Cambridge, and Russell Group universities is competitive, with thousands of students vying for limited spots. That means that your application needs to stand out.

And, at Helston, you get all the support you need to do precisely that.

Through our High Achievers programme, we have a proven track record in helping students understand what the top-tier universities are looking for, providing you with all the support and information you need to prepare confidently for every stage of your journey.

What You Get:

- Personalised mentoring and guidance through the application process
- Mock interviews and entrance exam preparation for Oxbridge candidates
- Oxbridge experience visits to both universities during Year 12.
- Group meetings to signpost opportunities to strengthen your applications
- Support to gain high calibre competitive work experience
- Masterclasses delivered by lecturers from Russell Group Universities
- Participation in the Exeter Scholars programme offering on-campus events and subject-specific field trips

Join the High Achievers Pathway and give yourself the best chance of going to the university you dream of.

Note: Students will be strongly encouraged to broaden their reading around their subjects and complete the EPQ alongside their chosen A Levels.



MEDICAL STUDENTS' PATHWAY

With an average of three or four applicants for each available place, you need to stand out from the crowd to be successful in your medical or veterinary school application.

We're here to give you the best chance of success.

With support delivered by school-based sessions and our university partners, we'll give you all the support you need to apply for your dream course with confidence.

What You Get:

Competitive Medical Work Experience: We help students to find valuable placements.

1:1 Mock Interviews: Experience realistic interviews with medical professionals.

UCAT/BMAT Entrance Exam Preparation: Benefit from expert guidance in exam preparation.

Army Medical Pathway Day: A unique opportunity for high achievers at HCC.

Join the Medics Pathway and strengthen your journey towards a rewarding medical or veterinary career.

Note: Students wishing to apply to study medicine are also strongly encouraged to complete the EPQ alongside their chosen A Level subjects.



ARMED FORCES' PATHWAY

Navigating the path to a career in the Armed Forces demands meticulous preparation, and at Helston, we have a history of guiding students toward their military dreams. Our recognition by the Royal Navy underscores our commitment to helping prospective Armed Forces candidates.

So, whether your sights are set on the Army, Navy/Marines, or RAF, we're here to ensure you're best prepared for the application process.

What You Get:

Personalised support: Our student support officer specialises in supporting military applications.

Valuable insights: External mentoring and meetings with serving personnel.

Opportunities for work experience: We regularly secure opportunities at RNAS Culdrose and Army residential placements at Okehampton barracks.

Military activity days: With involvement from the Army, Navy, and RAF, military days are engaging and practical.

Inclusion: involvement of the Armed Forces in the Post 16 apprenticeship event.

Inspirational talks and guidance: from ex-students and current serving personnel.

Participation in an Army Medical Pathway Day: Information and support for high achievers at HCC.

Sign up to the Armed Forces Pathway and arm yourself with the tools and support needed to achieve your military dreams.



SPORTS PATHWAY

Helston College's Sports Pathway is tailor-made for those who are enthusiastic about sports and dedicated to enhancing their performance, both as individuals and team players.

So whether you dream of personal excellence or aspire to lead and coach, this pathway offers an exciting opportunity to take your passion for sports to the next level.

Dive into the Sports Pathway and explore the following components:

- OCR Cambridge Technical Level 3 Sports qualification.
- Choice of additional subjects to complement your sports qualification.
- Personalised fitness programme: Benefit from a tailored fitness program along with dedicated training slots in our sports facilities that will improve your overall athletic capabilities, ensuring you're at your best.
- Training twice a week: Immerse yourself in your chosen sport with training sessions guided by qualified coaches. Refine your skills, hone your techniques, and build on your strengths.
- Video analysis: Analyse your performance and techniques, identify areas for improvement and fine-tune your approach.
- Opportunities to develop your sports leadership skills through involvement with sports events across the College.

Whether you're an aspiring athlete, leader, or coach, then Helston College's Sports Pathway is designed just for you.



WORK EXPERIENCE

It's not all about text books. Work experience gives students provides you with skills, understanding and appreciation of the commercial world and frequently inspires career direction.

Year 12 students at Helston College take part in an impressive array of work experience opportunities which have in the past included:

Goonhilly

The Williams Formula One team

Grazia magazine in London

The Royal Navy

Aeronautical engineering placements

High court judge shadowing

MI5 in London

Lab work at the University of Exeter

Finance department in a local hospital



ENRICHMENT PROGRAMME

Enjoy and take part in life beyond the classroom.

It's not just exam results that define success. Universities and employers are looking for well-rounded young people with a broad range of skills and experiences.

The Enrichment Programme is designed with this in mind. That's why for 70 minutes each week, we set aside time for you to uncover hidden talents, develop hobbies, explore your interests and stand out from the pack.

And it's not just about being well-prepared for university or employment — it's about becoming a confident, capable, and versatile individual ready to conquer any challenge.

Whether you're taking centre stage in our musicals, rocking it out in the Jazz Band, or exploring your creative side in the Art group, your passions are the driving force.

But that's not all. You're not confined to the familiar; you're encouraged to tread new ground - join the Eco group, make your voice heard in the LGBT+ group, or take part in sports tournaments led by your peers in the P16 student leadership team. And let's talk about practical skills - our Enrichment Programme is a hub for developing them too. Connect with subject leaders who are here to guide you through the academic maze.

Or are you looking for real-world experience? We've got you covered. Extended work placements throughout Year 12 will give you the edge in your journey towards your future career. Enrichment is your ticket to personal growth, skill development, and opportunity. It's time to explore your passions, shine, and define your path towards success.

ART & DESIGN FINE ART



Is this course for me?

A career in art and design will lead towards a lifetime of experimentation, invention and discovery. If you have a strong feeling for a particular discipline, be it fine art, film, fashion or textiles, or know that you long to work with colour, line, form, shape and pattern and that you love to explore and experiment then a career in art and design could be for you.

What qualifications do I need?

It is desirable to have studied some form of Art, Design or Technology subjects to a grade 5/6 at KS4. However, if you are keen and committed we can teach you missing elements during Year 12. You will need to bring a portfolio of your creative work showing your levels of confidence and skill to a member of the Art team and we will then advise you about your ability to access the course successfully.

What does the course involve?

Year 1. Three units of practical work: Core skills are covered through a range of disciplines including drawing, painting, printmaking and three dimensional studies. Themes such as abstraction, identity, structure and landscape are studied whilst making links to contextual sources through artist studies and presentations preparing for the second year.

Year 2. Specialist project exploring a specific genre and style which students become very involved with, personalising their progress to their interest areas. You will also need to complete a progressive journal where you clearly articulate verbally your investigation, demonstrating clear understanding and analysis of your own work. You finally take a controlled test that results in a 15 hour final piece that brings all your research and understanding together.

There may be considerably more options open to you than you first think: Skills developed on your course, such as research, negotiation, problem solving and teamwork can put you in direct competition with more traditional graduates giving you an even greater pool of opportunities to consider.

It may surprise you to learn that 40% of graduate opportunities advertised are open to graduates of any discipline!

Even within art design & media, there is still flexibility. Graphic designers may chose to use their design skills in gardens or interiors, and fine artists have been known to become well-established film makers.

It may be that you will choose to practice in several different areas - what is known as a portfolio career. We are not trying to confuse matters here, just encourage you to consider all the options!

BIOLOGY

Is this course for me?

Biology A level will give you the skills to make connections and associations with all the living things around you. Biology literally means the study of life and if that's not important, what is? Being such a broad topic, you're bound to find a specific area of interest, plus it opens the door to a fantastic range of careers.

What qualifications do I need?

You will need at least 5 GCSEs grade 4 or above, including English and maths, with grade 6 or above in science.

It is also advisable to study mathematics at A level or the Core Maths qualification.

"Biology was my favourite subject at GCSE and I need it to get onto Veterinary Science courses at University. The Sciences are good qualifications to have when going to University and I enjoyed Biology and Chemistry the most at GCSE so chose those subjects to study at A-level."

- BIOLOGY STUDENT

What does the course involve?

The A level qualification consists of 8 topics:

1. Biological molecules
2. Cells
3. Organisms exchange substances with their environment
4. Genetic information, variation and relationships between organisms
5. Energy transfers in and between organisms
6. Organisms respond to changes in their internal and external environments
7. Genetics, populations, evolution and ecosystems
8. The control of gene expression

What can I do afterwards?

A level biology is an excellent pathway to higher education in any scientific, medical or sport related discipline.

How will my work be assessed?

Paper 1

Content: Any content from topics 1-4, including relevant practical skills.

Assessment: Written exam: 2 hours. 91 marks. 35% of A level.

Questions: 76 marks: a mixture of short and long answer questions. 15 marks: extended response questions.

Paper 2

Content: Any content from topics 5-8, including relevant practical skills.

Assessment: Written exam: 2 hours. 91 marks. 35% of A- level.

Questions: 76 marks: a mixture of short and long answer questions. 15 marks: comprehension question.

Paper 3

Content: Any content from topics 1-8, including relevant practical skills.

Assessment: Written exam: 2 hours. 78 marks. 30% of A- level.

Questions. 38 marks: structured questions, including practical techniques.

CHEMISTRY

Is this course for me?

Are you keen, self-motivated and interested in finding out more about today's fast-moving, technologically oriented industry? Do you enjoy applying your knowledge through practical work and have an analytical mind? If you have answered yes to both questions, A level chemistry is for you! Chemistry is a basis for many higher education courses. Furthermore, by taking chemistry you also develop useful skills that can be applied outside of the subject discipline; these include problem solving, numeracy, practical skills as well as developing a broad scientific background. As a result, chemistry is a highly respected and useful qualification for most higher education courses and areas of employment.

What qualifications do I need?

You will need at least 5 GCSEs grade 4 or above as well as a grade 6 or higher in GCSE Science and GCSE Maths. It is also advisable to study mathematics at A level or the Core Maths qualification.

What does the course involve?

This course is uniquely different from other A level chemistry courses because it studies chemistry in the context of everyday applications. It introduces a chemical topic in one unit and then re-visits the same topic later in the course, developing theories further and allowing student learning to mature. Students will develop their practical expertise in all areas of chemistry which includes making polymers and aspirin.

Year 1:

- Elements for life
- Developing fuels
- Elements from the sea
- The ozone story
- What's in a medicine?

Year 2:

- The chemical industry
- Polymers and life
- Oceans
- Developing metals
- Colour by design

How will my work be assessed?

A level – OCR B H433

Paper 1 – Fundamentals of chemistry.
2hrs 15 mins written exam (41%).

Paper 2 – Scientific literacy in chemistry.
2hrs 15 mins written exam (37%).

Paper 3 – Practical skills in chemistry.
1hr 30 mins written exam (22%).
Practical endorsement for chemistry.
Internally assessed non-examinable (0%).

What can I do afterwards?

Chemistry A level is important for anyone thinking of studying degree courses in science subjects such as chemistry, biological sciences, chemical engineering, medicine, veterinary science, dentistry, geology, healthcare, sports science, nutrition, pharmacy and teaching. Other opportunities are considerable since chemistry is so well regarded by universities and employers. Students graduating from university with a chemistry related degree can also find employment in areas as diverse as law and management consultancy.



CORE MATHS

Is this course for me?

Core Maths is a one year qualification which is equivalent to an AS-level. It is aimed at students who wish to continue studying mathematics beyond GCSE level but who do not want to study A-level Mathematics. The course places emphasis on mathematical and statistical problem solving and is designed to support students who are on academic, mixed or vocational programmes of study, to prepare them for higher education, employment and their everyday lives.

Core Maths is aimed at students who are considering careers in a variety of technical and professional roles, and those who wish to develop their use of mathematics and statistics to support the work they will do in a wide range of other subjects including Business, Computing, IT, Biology, Chemistry, Sociology, Psychology and Geography.



What qualifications do I need?

The basic requirement is at least 5 GCSEs grade 4 or above including GCSE Mathematics at grade 5 or above.

What does the course involve?

This course involves learning about and using a mathematical modelling cycle, a statistical problem solving cycle and a financial problem solving cycle. Students will work with numerical information, statistics, graphs, geometry and measures to solve problems relating to everyday contexts including finance, costing and risk. Students will develop the skills needed to work on problems with limited guidance given about suitable methods to use or how to solve the problem; the ability to work independently, select relevant information and apply existing knowledge is essential. Students will also develop the ability to interpret, evaluate and communicate their solutions to others.

The use of technology – in particular, spreadsheets – is an integral part of the course. As a result of digital technology the scale of data collection has increased significantly in the workplace and in most areas of study. This qualification enables students to understand and process large sets of data by introducing a set of more sophisticated statistical techniques for solving problems, set in the context of the statistical problem solving cycle. Students follow this cycle, and in doing so, learn a powerful approach for solving a wide variety of problems.

How will my work be assessed?

Students studying Core Maths will take two examinations:

1. Introduction to Quantitative Reasoning (50%)
2. Statistical Problem Solving (50%)

Each examination consists of a 2 hour written paper. Both papers contain questions based on pre-release material. In Introduction to Quantitative Reasoning the pre-release material is published 3 months before the examination to enable students to become familiar with the contexts prior to the examination. In Statistical Problem Solving the pre-release material is a much larger data set which is published at the start of the year and which is used extensively throughout the year. 50% of the Statistical Problem Solving examination is based on the pre-release data.

What can I do afterwards?

This qualification gives students the mathematical skills to tackle problems in a variety of situations. It enables them to strengthen the mathematical knowledge and skills which they have learnt at GCSE so that they can apply them to the problems which they will encounter in further study, life and employment. It is also intended for students who need to continue with some mathematics because they intend at some stage to enter a teacher training or health professional training course.

DRAMA & THEATRE STUDIES

Is this course for me?

Are you keen, enthusiastic and committed to creating effective and original drama as well as interpreting existing published work for performance? Are you a co-operative person, willing to contribute to planning and developing ideas, supportive of others and are aware of the extra time out of lessons that practical performance exams require? Are you able to work towards exploring texts and performance of your own ideas and those of others, and be able to interpret published plays for exam performance? Do you have the drive and inspiration to be creative, think on your feet, tackle all aspects of theatre and practitioners, different eras and cultures? If so, this is the course for you!

What qualifications do I need?

You will need at least 5 GCSEs grade 4 or above including GCSE English at grade 5 and GCSE Drama grade 4 or above. Experience in theatre, whether as a performer, director or designer would be helpful too.



What does the course involve?

Students will:

- Create, perform and respond to drama and theatre
- Develop the creativity and independence to become effective theatre makers
- Explore the relationships between theory and practice in a range of theatrical styles and periods and historical cultural & social contexts
- Learn how relevant research, independent thought and analysis of live theatre production can inform decision making in their practical work and put this understanding into practice
- Experience ways in which theatre makers collaborate to create theatre performances.

How will my work be assessed?

Component 1: Drama & Theatre

What's assessed?

- Knowledge and understanding of drama and theatre
- Study of two set plays
- Analysis and evaluation of the work of live theatre makers

How it's assessed:

- Written exam: 3 hours
- Open book
- 80 marks - 40% of A Level

Component 2: Creating original drama

What's assessed?

- Process of creating devised drama
- Performance of devised drama (as a performer, designer or director) that is influenced by the work and methodologies of one prescribed practitioner

How it's assessed:

- Working Notebook (40 marks)
- Devised performance (20 marks)
- 30% of A Level - marked by teachers and moderated by AQA

Component 3: Making theatre

What's assessed?

- Practical exploration and interpretation of three extracts each taken from a different play (methodology of a prescribed practitioner must be applied to Extract 3) Extract 3 is to be performed as a final assessed piece
- Reflective report analysing and evaluating theatrical interpretation of all three extracts

How it's assessed:

- Performance of extract (40marks)
- Reflective report (20 marks)
- 30% of A Level - marked by AQA

What can I do afterwards?

Students successfully completing the course will have a thorough understanding of drama and theatre, highly developed analytical and creative skills and an ability to communicate effectively with others. Studying Drama and Theatre Studies at this level can open doors to many options of further/higher education or employment.

ENGINEERING

Is this course for me?

Engineering Design strengthens learners' critical thinking and problem solving skills within a creative environment, enabling them to develop and make prototypes/ products that solve real-world problems, considering their own and others' needs, wants, aspirations and values.

This qualification require learners to identify market needs and opportunities for new products, initiate and develop design solutions, and make and test prototypes/ products. Learners should acquire subject knowledge in design and technology, including how a product can be developed through the stages of prototyping, realisation and commercial manufacture.

What qualifications do I need?

The basic requirement is at least 5 GCSEs grade 4 or above, ideally students will have achieved a 6 or above in GCSE engineering or D&T and GCSE science and maths. An interest in art, and graphic design is a positive.

What does the course involve?

Students will study three units:

Unit 1: Principals of design and technology

- Analyse existing products.
- Demonstrate applied mathematical skills.
- Demonstrate their technical knowledge of materials, product functionality, manufacturing processes and techniques.
- Demonstrate their understanding of wider social, moral and environmental issues that impact on the design and manufacturing industries.

Unit 2: Problem solving

- Apply their knowledge, understanding and skills of designing and manufacturing prototypes and products.
- Demonstrate their higher thinking skills to solve problems and evaluate situations and suitability of design solutions.

Unit 3: The 'Iterative Design Project'

Learners will undertake a substantial design, make and evaluate project centred on the iterative processes of explore, create and evaluate. Learners also identify a design opportunity or problem from a context of their own choice, and create a portfolio of evidence in real time through the project to demonstrate their competence.

How will my work be assessed?

Principles of Design and Technology – written paper 26.7% of total A Level

Problem Solving – written paper 23.3% of total A Level

Interactive Design Project – non-examined assessment 50% of total A Level.

What can I do afterwards?

Students completing this course can, with further study, move into careers in aerospace engineering, chemical engineering, electrical engineering, manufacturing, materials science, civil, mechanical and marine engineering. Apprenticeships related to engineering or manufacturing are also possible.

A keen engineering mind is also sought after by financial institutions, insurance brokers and law firms as the key skill in engineering is problem solving in innovative ways.

Competent and enthusiastic engineers are highly sought after. Engineering is a subject in demand in the UK and abroad.

A career in engineering forms an occupational short list for a number of countries such as Canada and Australia and allows easier access to visas and exiting work opportunities in other countries and on amazing engineering projects around the world.



ENGLISH LANGUAGE & LITERATURE



Is this course for me?

If you have enjoyed English at GCSE and want to build on and develop the skills you have gained, and you enjoy reading and exploring the way the English language works, this may be the course for you. This is the only course where you can combine all the aspects of the study of English in both its written and spoken forms. This course will make you think, so you will be a person who enjoys exploring and sharing ideas!

What does the course involve?

Unit 1: Voices in Speech and Writing

Students study:

Voices in Speech and Writing: An Anthology
One Drama text: A Streetcar Named Desire

Assessment:

Written exam – 2 hours 30 minutes
50 marks
40% of A level

Unit 2: Varieties in Language and Literature

Students study:

A wide range of non-fiction texts on the theme of Encounters
A Room With a View – EM Forster
The Bloody Chamber – Angela Carter

Assessment:

Written exam: 2 hours 30 minutes
50 marks
40% of A level

What qualifications do I need?

You will need to have gained a grade 6 in English Language or Literature. You will also need at least 5 GCSEs grade 4 or above.

Unit 3: Coursework: Investigating and Creating Texts

Students study:

- A chosen topic (free choice)
- Two texts relating to their chosen topic: one fiction and one non-fiction

Students produce two assignments:

- Two pieces of original writing: one piece of fiction and one piece of creative non-fiction
- One analytical commentary reflecting on their studied texts and the pieces of writing they have produced
- Advisory word count is 2500 – 3000 words in total
- 20% of A level

It is assessed by teachers and moderated by Edexcel.



"I have really enjoyed studying the Language and Literature course as it has allowed me to explore my creative writing, and also help with my critical understanding of different texts."

- ENGLISH STUDENT

ENGLISH LITERATURE

“English literature at A enables you to learn a wide variety of essential skills. The texts we learn are all really interesting and force your mind to think outside the box!”

- ENGLISH STUDENT

What does the course involve?

Four units:

1. Drama
2. Prose
3. Poetry
4. Coursework

Drama

1. Shakespeare play – Hamlet
2. “Other” drama – The Importance of Being Earnest
3. Critical Anthology about Shakespeare’s Tragedy

Assessment:

- Written exam (2 hours 15 minutes)
- Open book
- 60 marks
- 30% of A level

Prose

Two texts on a chosen theme: Childhood:

1. Hard Times – Charles Dickens
2. The Colour Purple – Alice Walker

Assessment:

- Written exam: one hour
- Open book
- 40 marks
- 20% of A level

Poetry

Study of two texts:

1. The Poems of the Decade: Anthology of Poetry published post 2000
2. Modernist poetry

Assessment:

- Written exam – 2 hours 15 minutes
- Open book
- 60 marks
- 30% of A level

Coursework

Students have free choice of two texts to study and will need to write one comparative essay referring to their two texts. There is an advisory word count 2500-3000 words. It is 20% of the final A level.

It is assessed by teachers and moderated by Edexcel

Is this course for me?

If you love reading and have enjoyed studying texts in depth for GCSE and you want to learn more about the process of writing, how different texts ‘work’ and how writers from different eras develop their themes and styles, then this may be the course for you. You will also have the commitment to read widely and explore the authors and their work in detail, and you enjoy discussing issues and can write well.

What qualifications do I need?

You will need to have gained a GCSE grade 6 or above in English Language or Literature. You will also need at least 5 GCSEs at grade 4 or above.

What can I do afterwards?

In addition to leading to undergraduate courses in English and English Literature, English A level is very highly regarded as a key qualification for a very wide range of careers and other University courses. If you are considering applying to do any course at one of the Russell Group universities, you would be best advised to take English Literature rather than English Language and Literature.

FURTHER MATHEMATICS

Is this course for me?

If you have a great interest in Mathematics, and you have already opted to take A-level Mathematics, then you may also choose to study A-level Further Mathematics. Further Mathematics is particularly suited to those of you who have a keen interest and ability in Mathematics and perhaps intend to proceed to Higher Education on a course that demands a high level of Mathematics. Many universities prefer students to have studied Mathematics and Further Mathematics (to at least AS-level) if they wish to proceed onto a degree course in Mathematics. It is also for those of you who enjoy and can meet the challenge that Mathematics at this level can provide!

What qualifications do I need?

At least 5 GCSEs at grade 4 or above and GCSE Mathematics at grade 7 or above. You must also have opted to study A-level Mathematics.

What does the course involve?

As its name implies, the mathematics studied in this course is beyond that needed for A-level

Mathematics. New topics are introduced such as Complex Numbers, Polar Co-ordinates, Co-ordinate Systems, Hyperbolic Functions, Matrices and topics already met in the single A-level Mathematics course (such as Calculus and its applications, Vectors and Proof) are extended. It involves construction and interpretation of mathematical models and will consolidate, practise and extend algebraic skills and other mathematical skills, together with developing the skills to solve complex problems.

Throughout the course there will be opportunities to use ICT such as graphical calculators and computer software, together with the wide range of resources and material provided by Integral online. Students have the opportunity to enter national competitions and attend talks and workshops.

The units in AS Further Mathematics are:

- Pure Core
- Further Mechanics
- Further Statistics

The units in A-level Further Mathematics are:

- Pure Core 1
- Pure Core 2
- Further Mechanics
- Further Statistics

How will my work be assessed?

Examinations take place in May/June during Years 12 and 13. There is no coursework. If you take the AS exams at the end of Year 12 and then chose to carry on to do the full A-level, your Year 12 results will not count towards your A-level grade, only the

Year 13 exams will count, however your Year 12 results will be used on University application forms. Some students might choose to start AS Further Mathematics at the start of Year 13 as an additional AS once they have completed their AS in Mathematics.

What can I do afterwards?

Mathematical ability is very highly regarded by both universities and employers. An AS or A-level qualification in Further Mathematics provides an invaluable background for university courses which contain a substantial amount of Mathematics, such as Physics or Engineering. Students who go on to study Mathematics at university find Further Mathematics highly beneficial as it allows them to commence their University course having studied a broader range of Mathematical skills. Many universities state that they recommend that students intending to study Mathematics at university should study Further Mathematics; indeed at some universities Further Mathematics is part of the entry requirement for a Mathematics degree. Along with A-level Mathematics, Further Mathematics is recognised as excellent preparation for almost any career.



GEOGRAPHY

Is this course for me?

If you are interested in the state of the world, global environmental issues, political and economic changes and local geographical problems; if you want to make a difference in world management and sustainability, A level geography is for you! This course is your initial step towards a wide range of relevant career choices. The geography course also dovetails with the majority of other subject areas. Students often find links with science useful. The skills developed enhance your ability for success in humanities and arts-based subjects.

What qualifications do I need?

You will need at least 5 GCSEs at grade 4 or above including a 6 or above in GCSE Geography. It is also advisable to study the Core Maths qualification alongside this subject.

"A-Level geography helps you learn about potential solutions to the problems that our world faces - such as deforestation."

- GEOGRAPHY STUDENT

What does the course involve?

This course explores the key principles, concepts and processes that explain geographical phenomena and landscapes. It maintains the balance between physical and human geography whilst ensuring relevance to the modern world.

The modules are as follows:

Component 1 - Physical Geography

- Water and Carbon Cycles
- Coastal Systems and Landscapes
- Glacial Systems and Landscapes
- Hot Desert Systems and Landscapes
- Hazards
- Ecosystems Under Stress

Component 2 - Human Geography

- Changing Places
- Contemporary Urban Environments
- Global Systems and Global Governance
- Population and the Environment
- Resource Security

Component 3 - Geography Fieldwork Investigation and Geographical Skills

- Individual Investigation 4,000 words
- Generic Geographical Skills

How will my work be assessed?

Two exam papers of 2 hours 30 minutes each and a 3000-4000-word investigation.

What can I do afterwards?

Geography opens the doors to a wide range of relevant and interesting careers of the future. For example: Cartographer, Climatologist, Conservationist, Earth Scientist, Environmental Planner, Geographic Information Specialist, Geologist, Geomorphologist, Hydrologist, Land Use Planner, Meteorologist, Natural Resource Manager, Police, Regional Planner, Remote- Sensing Analyst, Soil Scientist, Teacher, Tourism Development, Traffic Manager, Transportation Planner, Travel Agent, Urban/ City Planner, Water Resource Manager.



GEOLOGY

Is this course for me?

The unique geological processes that occur on Earth make it possible for life to originate, evolve and survive and if you would like to know how our planet works and unravel its history, this is the course for you. Geology goes well with chemistry, physics, geography and biology and there are opportunities to learn new skills which will impress future employers and for you to participate in theory sessions, practical coursework and hands-on fieldwork. You will need to be willing to join in with group work and to communicate with others, but have the self-discipline to complete guided research individually.

What qualifications do I need?

You will need at least 5 GCSEs at grade 4 or above, including a grade 6 in science and maths. It is also advisable to study the Core Maths qualification alongside this subject.

What does the course involve?

Units throughout the two years will build your geological skills to prepare you for the examinations and coursework. The course context will be covered to develop a comprehensive understanding of geological processes and to build

a practical skill base. A variety of methods will be used including practical investigations, fieldwork, ICT simulations, group presentations, problem solving, class discussion, practical questions, quizzes, individual research and lectures. You will be expected to attend a minimum of 2 days local fieldwork in Year 12 and 4 days fieldwork at A Level. This is a broad-based science course with many transferable skills.

How will my work be assessed?

Throughout the two-year course your work will be continuously assessed. Final grades are determined by:

Component 1: Geological Investigations

Stimulus response questions requiring short and structured answers and an investigation of the geology of an area. (2 hours 15 minutes, written paper, 35% of qualification).

Component 2: Geological Principles and Processes

Stimulus response questions requiring short, structured and extended answers. (1 hour 45 minutes, written paper, 30% of qualification)

Component 3: Geological Applications

Stimulus response questions, a geological investigation and extended answers. (2 hours, written paper, 35% of qualification).

What can I do afterwards?

This course builds upon GCSE Science and GCSE Geography and is an excellent pathway to higher education in scientific, geological,

environmental or engineering related disciplines. Suitable careers such as Environmental Scientist, Geologist, Mining Engineer, Surveyor, Oceanographer, Palaeontologist plus many jobs in the mineral and petroleum industries. We have good links with the University of Exeter (Tremough Campus) through regular trips and visits, and this gives students a useful insight into possible degree courses that are available. Students with Degrees in Geology are highly employable, and students often find well paid employment, both home and abroad before they complete their degree.

Hands on experience

Cornwall is blessed with world class geology, particularly around the Lizard coastline. All geology students will experience many field trips around Cornwall which will strengthen their understanding of the theory taught in class. Field trip activities range from studying sedimentary deposits at Godrevy, exploring a tin mine shaft at Troon to visiting Cornwall's only landfill! Each year we also aim to organise an overseas trip, and in past years, students have enjoyed the once in a lifetime trip to the 'land of fire and ice', this being Iceland!



HISTORY

Is this course for me?

If you have enjoyed studying history and are interested in understanding key developments in British and European History this is a worthwhile course for you. The aim is for you to gain a deep knowledge of the topics studied in order to develop your own interpretations of the past. Within the course you will also have the opportunity to write your own piece of history about a topic of your choice, and to develop skills of research, analysis and communication.

A range of teaching methods are used including:

- Individual research
- Pair and group work
- Extended original writing and thought
- Evaluation of evidence
- Evaluation of historical interpretations
- Pictorial presentations
- Background reading
- Discussion of key themes and topics
- Debates and mock trials
- Seminar style presentations
- Note taking and essay writing
- Study of film clips and videos

During the course we plan to organise a visit to a relevant historical location abroad such as Berlin and Krakow, and closer to home we visit English Civil War sites in Cornwall.

What qualifications do I need?

You will need at least 5 GCSEs at grade 4 or above including a grade 6 in GCSE History.

What does the course involve?

- Unit 1 Y108: The Early Stuarts and the Origins of the Civil War 1603-1660
- (Enquiry Topic – The execution of Charles 1 and the Interregnum 1646-1660)
- Unit 2 Y221: Democracy and Dictatorship in Germany 1919-1963
- Unit 3 Y318: Russia and its Rulers 1855- 1964
- Unit 4 Y100: Topic based Essay (3000-4000 words)

How will my work be assessed?

Unit 1: Students will answer one source- based question related to the Enquiry Topic and one essay question, from a choice of two, related to the Period Study (25% A Level total).

Unit 2: Students will answer one two-part question from a choice of two, including the first which will be a comparison of two factors with an overall judgement, plus an essay related to the Period Study (15% A Level total).

Unit 3: Students will answer questions from two sections (40% A Level total):

- Section A - one essay question based on two extracts from historians about one of the three depth studies
- Section B - two essay questions from a choice of three drawn from the historical themes section

Unit 4: Students will complete one essay (3000-4000 words) arising from an independent study on a topic of their choice (20%)

Is this course for me?

Having completed this course you will have gained an interest and understanding of the modern world. You will have become highly skilled in the analysis and judgment of complex evidence and ideas as well as proving yourself capable of sustained original thought. Also your communication skills will be greatly enhanced. This is an excellent qualification for university entry, law, journalism, media, publishing, politics, the civil service, teaching, research, social work administration and many other careers. Employers rate history highly as it helps develop “transferable skills” which are useful in most professional jobs.

“I enjoy learning about the connections between past events and the present, and lives different to my own.”

- HISTORY STUDENT

MATHEMATICS

Is this course for me?

Mathematics is one of the most general, and one of the most fundamental subjects that you can study. It gives you an excellent grounding for any subject and is itself a prerequisite for many.

If you enjoy Mathematics (particularly algebra) and feel confident with the work you have met so far at GCSE, then you should consider Mathematics A-level.

It is a demanding and challenging subject but it can be an extremely rewarding one if you are prepared to put in time and effort.

What qualifications do I need?

You will need at least 5 GCSEs at grade 4 or above including GCSE Mathematics at grade 6 or above.

What does the course involve?

The focus of A-level Mathematics is on algebra and problem solving. The work you will study will consist of Pure Mathematics and Applied Mathematics. Pure Mathematics provides methods involving algebra, trigonometry, coordinate geometry and calculus which can be used to solve problems in other branches of Mathematics. Applied Mathematics is divided into Mechanics and Statistics. Mechanics is about forces and motion of objects, Statistics is about data analysis and real world applications.

Throughout the course there will be opportunities to use ICT such as graphical calculators and computer software, together with the wide range of resources and material provided by Integral online. Students have the opportunity to enter national competitions and attend talks and workshops.

Students studying A-level Mathematics will take three modules which will be examined at the end of Year 13.

The units in AS Mathematics are:

- Pure and Mechanics
- Pure and Statistics

The units in A-level Mathematics are:

- Pure Mathematics and Comprehension
- Pure and Mechanics
- Pure and Statistics

How will my work be assessed?

Examinations take place in May/June during Year 13. There is no coursework.

What can I do afterwards?

Mathematical ability is very highly regarded by both universities and employers. An A-Level in Mathematics is essential for many degree courses (such as physics, engineering and, of course, mathematics itself!), and is highly desirable in a wide range of subjects such as chemistry, natural sciences, architecture, computing, accounting, economics, business and psychology to name but a few. Mathematics can provide you with the problem solving and analytical skills that are useful

in almost every career path and it is highly regarded by many employers. If you are thinking of looking for a job straight after A-levels, Mathematics is a great "core" subject - in fact, it is one of the most important subjects you can take. This is because the ability to understand and manipulate numbers and mathematical concepts is extremely useful for almost any job. There is a national shortage of mathematicians, and employment prospects are good. There is always a demand for employees who can think logically and process information accurately - skills which an A-level in Mathematics will teach you.



"I chose A level Maths because I enjoyed GCSE Maths and I know it is very useful and widely applicable; it creates logical thinking and is valued by universities."

- MATHEMATICS STUDENT

MEDIA STUDIES

Is this course for me?

You'll need to be a keen consumer of a range of media throughout the course, and be prepared to learn interesting new and established frameworks for understanding issues relating to the mass media. Creative-minded students also tend to really enjoy media production work. This means being prepared to study and engage with many media texts, some of which will be outside your usual consumption. One week you may need to follow the news in both print and broadcast formats, listen to the radio, or explore websites in your study of the digital media. There is a Non Examined Assessment involving practical production – you'll need to be prepared to learn new technical skills, to be self-reliant, well-organised and motivated to succeed.

What qualifications do I need?

You will need at least 5 GCSEs at grade 4 or above including a Grade 5 in English Language. There is no need to have studied GCSE Media Studies, as the course is taught from scratch and does not assume any prior knowledge of the subject.

What does the course involve?

The AQA specification has put a heavy emphasis on the importance of media in a changing world and at the fore of the digital revolution. It also provides you with the opportunity to stretch your experience of the media by looking at some texts which are historical, and some which are made for audiences in other parts of the world. You can choose to learn some web design, digital video editing in Adobe Premiere, or to use Photoshop to produce really professional-looking print products. You'll develop a good understanding of who media audiences are and why they consume what they do. You'll learn about the media industry, who controls it, and how.

How will my work be assessed?

There will be two exam papers. These are worth 35% each – 70% of your A Level, and contain a mixture of shorter questions and longer, higher value responses. The first paper is focused around an identified theme and the theoretical framework. The practical NEA (30% of the A level) also will be linked to this theme, although students will have a great deal of flexibility in what they choose to make. The second paper has a similar question format, but focuses instead on questions relating to the twenty-four close study texts.

What can I do afterwards?

Media Studies develops you as a person. It gives you new skills and improves the ones you may already have. You'll become a better critical thinker, able to spot flaws in arguments and understand different perspectives.

You'll become a more skilled writer, able to order ideas in a thoughtful and confident way. You'll learn new technical skills. Many of our media students enjoy the subjects so much they go on to study further at university. There are a huge number of related courses available at HE, such as those with a vocational heart such as Television and Film Production, Broadcast Journalism or Advertising and PR to more traditionally academic courses such as Media and Cultural Studies. If university isn't your thing, you'll still find you have plenty of skills which are attractive to employers.



MUSIC



Is this course for me?

If you have a keen interest in creating and listening to different styles of music, and if you wish to further your appreciation and understanding of music, then this is the course for you. There is a strong emphasis on performing and you can perform in any style, whether it's jazz, classical, folk or heavy metal.

What qualifications do I need?

You will need at least 5 GCSEs at grade 4 or above including a grade 5 or above in GCSE English. You will also need a grade 6 or above in GCSE music. However, if you have not studied GCSE Music and are interested in the course, it is essential that you contact the course tutor before signing up.

What does the course involve?

A level Music is a two-year course comprising of three components.

Component 1: Appraising (40%)

This part of the course is designed to further develop your listening and appraising skills. At the end of the second year there is an exam where you listen to familiar and unfamiliar music and answer questions relating to the extracts. You are also expected to demonstrate a contextual awareness of what you have studied. Area of Study 1 is compulsory. Two more are chosen from areas of study 2 – 7.

AOS 1: Western classical Music (1650 – 1910)

AOS 2: Pop Music

AOS 3: Music for Media and Film

AOS 4: Music for Theatre

AOS 5: Jazz

AOS 6: Contemporary Traditional Music

AOS 7: Art Music since 1910

Component 2: Performing (35%)

This component involves creating a programme of music lasting for at least 10 minutes. The performance can be on any instrument and of any style and can involve any combination of:

- Solo performing
- Ensemble performing
- Production via music technology

For solo and ensemble performing the level of difficulty is expected to be equivalent to between grade 5 and 8.

Component 3: Composition (25%)

Students will learn how to develop musical ideas, including extending and manipulating musical

ideas, including extending and manipulating musical ideas, and learn to compose music that is musically convincing through two compositions. One must be in response to an externally set brief by the exam board (AQA) and the other a free composition which can be in any style. The combined duration of the compositions should be a minimum of four and a half minutes.

What can I do afterwards?

After completing Music A level, many students from Helston Community College have gone on to study music at conservatoires, universities and music colleges. It is also an excellent route if you are interested in a career as a musician in the armed forces.



PHILOSOPHY

Is this course for me?

The study of philosophy develops an inquiring mind, the ability to analyse a point of view, the ability to develop and think through an argument and to reach a logical and justified conclusion. The emphasis is upon 'why'. This is a new course that focuses on 4 major themes in philosophy. We begin with an introduction to epistemology – what is knowledge? How do we perceive things? Am I hallucinating? Is this a dream? What is reality? This is to introduce one to philosophical language, arguments and ideas.

The course is then structured around 'Themes' and 'Philosophers', the aim being to introduce you to some of civilisations' great thinkers and their 'ideas'. Your understanding and philosophical development will be assessed both orally and through essay writing.

Philosophical training provides the skills needed to think independently and question what others may take for granted, and fortify your courage when making a moral stand.

What qualifications do I need?

You will need at least 5 GCSEs at Grade 5 or above including a grade 6 or above in either English, history or religious studies.

What does the course involve?

AQA A Level Philosophy is divided into 4 subjects two of which are taken in the first year and two in the second year.

- Epistemology – What is knowledge? The nature of impressions and ideas. Are there limits to what we can know?
- Moral Philosophy – The meaning of good and bad. Looking at Aristotle, Kant and Bentham
- The Metaphysics of God – The concept and nature of God and 'The Problem of Evil and Suffering'
- The Metaphysics of Mind – Mind/brain identity theory, what do we mean by mind?

How will my work be assessed?

External Assessment of Units:

Paper 1: Epistemology and Moral philosophy
(Written exam: 3 hours 100 marks, 50% of A level)

Paper 2: The Metaphysics of God and the metaphysics of mind (Written exam: 3 hours, 100 marks, 50% of A level)

Internal Assessments will be used to monitor students' progress leading up to examinations. Assessments in the form of essays and practice exam questions and class presentations will be collected for every 12 hours of learning to determine progression and to assist in setting targets.

What can I do afterwards?

You may choose philosophy to broaden science, business or humanities studies. Philosophical skills are recognised by employers, universities and colleges. Philosophy is an excellent foundation for a number of careers including Politics, Scientific Research, Medicine, Journalism, Law, Business and Teaching.



"Philosophy is such a wide ranging subject that it really broadens my knowledge and understanding of so many different ideas, its really all about language. Do I know what I mean and can I say what I mean? That's especially helpful in my English lessons."

- PHILOSOPHY STUDENT

PHOTOGRAPHY

Is this course for me?

Are you excited about learning a brand new skill? For nearly every student starting this course it will be the first time they have worked in a darkroom or taken photographs in a studio with a film camera. You will discover a new medium to create fantastic permanent and original images. Alongside this you will be able to develop your digital skills in colour photography, become visually and critically aware and learn about the history of photography. Good subject combinations are Art, Technology, Media Studies, English, IT, Geography. Photography is fun and will provide a breath of fresh air to any subject combination.

What qualifications do I need?

No previous knowledge of photography is required. You will need at least 5 GCSEs at grade 4 or above including a grade 4 or above in Art and Design or Design Technology...

What does the course involve?

The course is divided into the following three areas.

Practical investigation: Understanding and use of equipment and processes. Camera, light meter, studio lighting, film processing, darkroom, enlarger

and chemical processes. Use of digital cameras, Photoshop and InDesign. Health and safety.

Personal study: This involves an extended essay offering an opportunity to study your favourite genre of photography in depth. This may include gathering information from a practising photographer as well as from written sources.

Externally set task: A practical test, 15 hours at the end of the second year. A chance to demonstrate your planning, critical, technical and creative skills.

This is essentially a practical course and students will be expected to become skilled in all aspects of the techniques of photography, including the processing of black and white images traditionally and in the manipulation of digital images using Photoshop.

Students will develop visual and critical skills, study the history of photography and become familiar with the work of established photographers.

The main emphasis of this course is CREATIVITY.

How will my work be assessed?

Component 1 - Personal Investigation

Element 1: Practical Portfolio

A practical research project investigating many aspects and genres of black and white and colour photography, mostly darkroom based in year one. Contextual studies and history, including the illustrated study of a well-known photographer.

Element 2: Related Study

Undertaken in year 2 involving a greater depth of study and lead by the student's particular area of interest.

Introduction of digital skills, Photoshop, InDesign, Studio flash with digital SLR cameras, leading to an illustrated essay about photographers/artists working in a style or genre that inspires the student. You will create a great set of your own images informed by the study.

Component 2:

Externally set task:

A 15 hour practical task.

What can I do afterwards?

- Become a professional photographer
- Students may wish to continue their education in Photography, Media Studies or Art and Design.
- This qualification would further a career in film making, television, journalism, and any media-based employment.

"Photography lets me explore the world and highlight important issues, as well as focus on showing the viewer things other people often ignore. It offers those that view my images a new lens into life and beauty in the things that are not stereotypically seen as beautiful. It helps me express myself."

- PHOTOGRAPHY STUDENT

PHYSICS



Is this course for me?

Are you interested in how the universe works? Physics is the basis of our understanding of the universe and can reveal the fundamental physical processes within it. If you have an enquiring mind with good mathematical skills then physics will provide you with a basis for further study and employment in many modern technological and engineering-based subjects.

What qualifications do I need?

You need at least 5 GCSEs at grade 4 or higher including a grade 6 or above in GCSE Science or Physics and grade 6 in Mathematics. It is also preferable to study mathematics at A level or the Core Maths qualification.

What does the course involve?

Nine modules are studied.

1. Measurements and their errors
2. Particles and radiation
3. Waves
4. Mechanics and materials
5. Electricity
6. Further mechanics and thermal physics
7. Fields and their consequences
8. Nuclear physics
9. Turning Points in Physics

How will my work be assessed?

Paper 1: 120 min written exam (34% of A level)

Paper 2: 120 min written exam (34% of A level)

Paper 3: 120 min written exam (32% of A level)

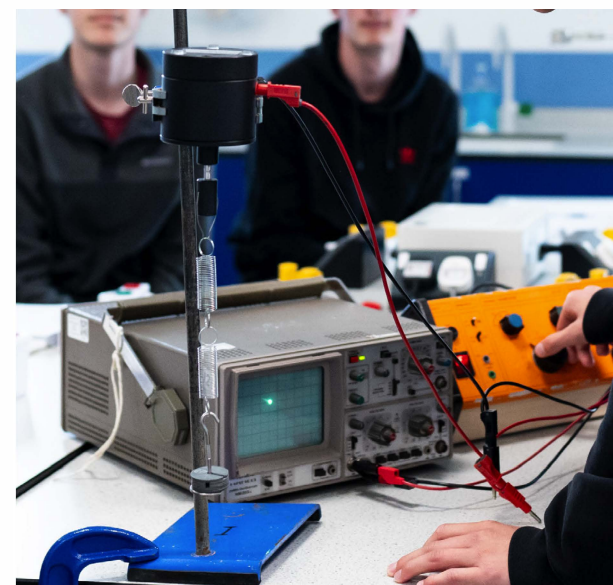
Practical knowledge skills will be assessed on the papers above.

The Practical Endorsement: Students will perform 12 required practical tasks as part of their learning on the course.

Successful completion of these experiments will result in students being awarded the Practical Endorsement on their final qualification.

What can I do afterwards?

Physics is highly regarded for entry into many higher education courses. Also, the career opportunities are as vast as the subject itself due, in part, to the transferable skills gained whilst studying physics. Physicists work in some of the highest paid sectors of industry, including finance, telecommunications and the electrical industry. Physicists are also found working in many diverse areas such as research and development, medicine, astronomy, meteorology, geology and particle physics.



"Physics is enjoyable and interesting, and because it opens up many career avenues."

- PHYSICS STUDENT

PSYCHOLOGY

Is this course for me?

Until you try it you won't know! If you enjoy thinking about why people behave in the way that they do or if you want to understand yourself better, then this course will be of interest. You will learn about your memory, stress, psychological disorders, obedience and conformity and will study a range of other topics. Since all jobs involve dealing with people, having some understanding of human behaviour is going to be an advantage! Psychology is a well established course at Helston Community College and has remained a consistently popular choice for Post 16 students because they find the course interesting, challenging, satisfying and fun!

What qualifications do I need?

You will need at least 5 grade 4's in GCSE subjects (not equivalents), successful students tend to have at least 2 grade 6's from English, Maths or Science. It is also advisable to study the Core Maths qualification alongside this subject.

What does the course involve?

A wide range of teaching methods alternating between teacher-centred and student-centred lessons. Students will find out about: the attachment between babies and parents, the effects of extreme neglect upon a child's development, how their memory works, and ways to improve it, how other people can influence them to carry out atrocities such as the holocaust, stress, its effects and ways to cope with it, as well as psychological disorders such as schizophrenia and anorexia.

Additionally students can study, relationships and aggression.

Students also learn to analyse theories and investigations in a critical way and develop the skills to carry out their own psychological investigations.

How will my work be assessed?

For the complete A2 course there will be three different examinations.

Paper 1: Social Psychology, Attachment Memory & Psychopathology

Paper 2: Approaches to Psychology, Biopsychology & Research Methods

Paper 3: Relationships, Schizophrenia, Aggression and Issues & Debates

What can I do afterwards?

If you think you will end-up working with people or animals then this is a relevant course! Psychology has grown to be one of the largest subjects taken at A Level. Part of the reason for this is the subject's popularity amongst students but it is also due to both Universities and employers recognising the value of the course and the skills it encourages students to have. Students with degrees in Psychology can enter a whole range of graduate professions and after additional training can become clinical psychologists, diagnosing and treating those with mental illness.

"Psychology is my favourite subject. I find it interesting to study human behaviour and the way our lessons are taught make it really enjoyable."

- PSYCHOLOGY STUDENT

SOCIOLOGY

Is this course for me?

If you are the type of person who likes to question why things happen as they do, then sociology is the subject for you.

Sociology is the scientific study of human society, social behaviour and the social forces that shape our identity, culture and behaviour. Sociologists examine the world around us and try and make sense of why we behave as we do; by studying patterns of behaviour we become to understand ourselves and those around us a little better.

The A level course focuses upon the various social institutions that we all belong to, such as the family, education and the criminal justice system. You will examine some of the common-sense beliefs surrounding our views of these institutions, and develop a critical view of our stereotypical assumptions.

If you find human behaviour and social issues interesting, then you will enjoy this course as it deals with fundamental questions about how much we do is “natural” or instinctive and how much is taught to us and learned. You will be surprised by the answers. The subject is a social science whose aim is to explain how society works, what causes social problems and inequalities and why we interact with others in the ways which we do. It will change how you view the world.

What qualifications do I need?

You will need at least 5 GCSEs at grade 4 or above including grade 6 in English. A willingness to read, watch & listen to contemporary news.

What does the course involve?

Compulsory Content:

- Education with Theory & Methods
- Crime and Deviance with Theory & Methods

Topic Options:

- Option 1: Families and Households
- Option 2: Stratification in society

Work Involved

- Discussion and debate.
- Analyse social issues and personal experience.
- Evaluate evidence and arguments.
- Research social issues
- Role play and presentations
- Present explanations, ideas and arguments in a coherent and logical form.
- Use IT to collect and analyse data.
- Complete regular written assignments.

How will my work be assessed?

Paper One

- Two hour written exam, 80 marks, (33.3% of the A level)

Paper Two

- Two hour written exam, 80 marks, (33.3% of the A level)

Paper Three

- Two hour written exam, 80 marks, (33.3% of the A level)

What can I do afterwards?

A level sociology is a useful subject should you wish to take a career in the following:

- Criminology
- Teaching
- Politics
- Nursing/caring occupations.
- The Police
- Central or Local Government

Sociology is a useful and highly regarded degree option at University.

“Sociology has taught us about the interaction between individuals, as well as how we are influenced by society. We look at the sorts of things that people believe and how it effects their actions.”

- SOCIOLOGY STUDENT

SPANISH



Is this course for me?

Are you keen to learn more about other cultures and to communicate confidently with other people? Do you have the drive to discover more about the language of the country and its grammar? Do you wish to travel widely and to gain experience of the world? Are you happy to work with others and discuss your progress with your tutors and fellow course students? If so, A Level Spanish could be the course for you! You will also be able to work independently when necessary.

What qualifications do I need?

You will need at least 5 GCSEs at grade 4 or above including a grade 6 or higher in the language. When necessary, decisions will be based on attitude and commitment in Years 10 and 11 and in discussion with your tutors.

What does the course involve?

The AQA A level in Spanish helps students develop confident, effective communication skills in Spanish and a thorough understanding of the culture of countries and communities where Spanish is spoken. It develops an interest in, and enthusiasm for, language learning and encourages students to consider their study of the language in a broader context. The study of literature and film will allow you to undertake a deeper analysis of language structures and increase your cultural awareness as part of an integrated approach to language learning.

The requirement to research an area of personal interest related to the country / communities where Spanish is spoken will also enhance your cultural appreciation and enable you to gain a greater awareness of intercultural differences. You will study:

- Aspects of Hispanic society
- Artistic culture in the Hispanic world
- Multiculturalism in Hispanic society
- Aspects of political life in Hispanic society

How will I be assessed?

Paper 1: Listening, Reading and Writing - 2 hours 30 minutes - 50% of A level including translations from Spanish to English, and English to Spanish.

Paper 2: Writing - 2 hours - 20% of A level including two essays one on the film and one on the novel studied.

Paper 3: Speaking - 21-23 minutes - 30% of A level including discussion of a stimulus card and presentation and discussion of individual research project.

What can I do afterwards?

With a qualification in languages you could go on to Higher Education or directly into employment. There are numerous possible career paths and employment amongst languages graduates is very high compared to other subjects. Did you know that languages graduates have one of the highest employment rates, more than any other graduates after medicine and dentistry? However, you don't have to do a degree in languages for it to be useful.

Here are just some of the areas in which languages can help: Accountancy, Advertising, Banking, Civil Service, Diplomatic Service, Export marketing, purchasing and selling, Hotels and catering, Insurance, Journalism, Librarianship, Management Consultancy, Museums, Publishing, Secretarial work, Shipping services, Teaching, Television and Radio, and Travel and Tourism.

ART DIPLOMA

What are Art Diplomas?

These qualifications have been designed by further education experts from institutions across England and the UK to provide young people with the knowledge, skills and understanding necessary to progress to degree level study in art and design, or into employment. Intentionally designed to cultivate conditions where an interest in the visual arts can be explored, developed and creativity tested; while remaining stimulating, demanding and supportive, they help students in the transition from further to higher education and employment.

Is this course for me?

A career in art and design will lead towards a lifetime of experimentation, invention and discovery. If you have a strong feeling for a particular discipline, be it fine art, film, fashion or textiles, or know that you long to work with colour, line, form, shape and pattern and that you love to explore and experiment then a career in art and design could be for you.

What qualifications do I need?

Students should have a minimum of 4 GCSEs at grade 4 or above, at least one of which should be in an art and design subject at a grade 6 or above (or the equivalent level 2 qualification in an appropriate subject). A grade 5 in English is also recommended.

What does the course involve?

This broad-based course is designed to help you develop a range of creative skills. The first year Diploma course includes drawing, painting, printmaking, ceramics, graphic design, fashion and textiles and sculpture. You will be encouraged to experiment with a variety of materials and techniques, and you will develop your skills in communicating your ideas and opinions, whilst you will learn about other artists and designers. The Art Diploma is a very practical course that allows you to experience a range of art and design activities before choosing the field you wish to specialise in.

As the course progresses you will concentrate on the skills for your chosen area and develop confidence in your own ideas and creativity.

You will cover a range of skills and projects all based on actual creative and design scenarios through 8 units of study developing your knowledge and understanding for art and design in all specialist areas, ending in an externally moderated Major Final Project.

How will my work be assessed?

Units 1, 2 and 7 are externally set and marked. There is a set time under exam conditions for evaluative writing and completion of the brief set. Units 3, 4 and 5 are mandatory but internally assessed.

2 further units of study are made in Yr13 to reflect your own specialist area and assessed internally. In year 1 units 1,3,4, are fully assessed and completed. In year 2 units 2,5 and 7 plus 2 optional units are fully assessed and completed.



What can I do afterwards?

There may be considerably more options open to you than you first think: skills developed on your course, such as research, negotiation, problem solving and teamwork can put you in direct competition with more traditional graduates giving you an even greater pool of opportunities to consider. It may surprise you to learn that 40% of graduate opportunities advertised are open to graduates of any discipline! Even within art design & media, there is still flexibility. Graphic designers may choose to use their design skills in gardens or interiors, and fine artists have been known to become well-established film makers. It may be that you will choose to practice in several different areas - what is known as a portfolio career. We are not trying to confuse matters here, just encourage you to consider all the options!

There are over 70 art-related subjects. They all relate directly to the creative industry. The creative industry is the largest industry in Britain - and growing! Nearly 20% of jobs in Cornwall are part of the creative industry. A few examples of careers & courses in Art & Design include: Architecture, Graphics, Advertising, Illustration, Fashion, Fashion marketing, Textiles, Education, Television, Product Design, Stage Design, Ceramics, Photography, Film, Admin/ Curation, Art Therapy, Art History and Art Restoration. Games Design, Concept Design, Environmental Design, Landscape and Interior Design, Furniture and 3D design. Animation and Media.

BUSINESS EXTENDED CERTIFICATE

Is this course for me?

If you have a keen interest in developing the skills required to be successful in Business in the 21st century, this course is for you. This Level 3 Business course is practical and uses a combination of assessment styles to give you confidence that you can apply your knowledge to succeed in the workplace. It is designed to equip you with the knowledge, understanding, skills, techniques, attributes and personal qualities essential for successful performance in the Business sector. This is a two year course which will provide a strong academic background whilst allowing you to develop skills that will prepare you for both the world of work and the demands of Higher Education courses.

What qualifications do I need?

You will need at least 4 GCSEs at grade 4 or above including a grade 4 in both English and maths.

What does the course involve?

You will be involved in a range of practical activities, including group and paired work, individual research, preparing and giving presentations and discussing case studies. You will have the opportunity to interact with visiting speakers and to experience external visits to local and national businesses. Throughout the course you will gain knowledge and understanding of how businesses operate, while developing the practical, technical and personal skills required in the Business environment.

The Edexcel Level 3 Extended Certificate (equivalent to 1 A Level) consists of 3 mandatory units plus 1 optional unit.

You will study the following three mandatory units:

Exploring Business
Developing a Marketing Campaign
Personal and Business Finance

You will also study one unit from the following options:

Recruitment and Selection Process
Investigating Customer Service
Market Research
The English Legal System
Work Experience in Business

How will my work be assessed?

This Level 3 Business course is practical and uses a combination of assessment styles over the 2 years, including:

- Practical reports
- Portfolio of work
- Presentations
- 1 x Controlled Task (externally set and marked)
- 1 x written exam (externally set and marked)

There will be several opportunities for organised college trips as part of the course.

How will my work be assessed?

Upon successful completion, this qualification can lead you to apply for a degree course in various disciplines at University. You can also use the skills and knowledge acquired during this course to embark upon a career in the Business sector. Business qualifications can lead straight into employment in a variety of roles from junior / middle management upwards and some entrepreneurial students may set up and run their own businesses.



FOOD SCIENCE & NUTRITION DIPLOMA

Is this course for me?

Are you eager to continue with your knowledge, understanding and cooking of food and have a desire to continue in your food studies? The level 3 course is suitable for those students who have the drive and passion to progress in their food education and are keen to take it to the next level. The course is the equivalent to one A level.

What qualifications do I need?

You will need at least 4 GCSEs at grade 4 or above. It is preferred that you have taken the Food Preparation and Nutrition course at GCSE level and have achieved a grade 4 or above.

What does the course involve?

The course structure for year 12 is based on one overall mandatory unit 'Meeting Nutritional Needs of Specific Groups'. This has an applied purpose which acts as a focus for the learning in the unit. There are subsections within the unit to complete as assignments these include:

- Understanding the importance of food safety
- Understanding the properties of nutrients
- Understanding the relationship between nutrients and the human body
- Being able to plan nutritional requirements
- Being able to plan complex dishes
- Being able to cook complex dishes

The diploma is a continuation of the certificate. It is equivalent to one GCE A Level. It consists of a mandatory unit and one optional unit.

The mandatory unit is 'Ensuring Food is Safe to Eat', and there are two optional units 'Experimenting to solve Food Production Problems' and 'Current Issues in Food Science and Nutrition'. Both units are completed within College hours and are externally assessed.

How will my work be assessed?

Work for the level 3 certificate and diploma will be both internally and externally assessed. The internal assessment will comprise of a selection of mandatory summative controlled assessments for the unit. The external assessment will comprise of a 90 minute examination with 15 minutes prior reading time. The examination will include short answer questions, long answer questions and questions which relate to a case study. The examination takes place in the summer term of year 12. All work including the written exam will be graded Level 3 Pass, Level 3 Merit or Level 3 Distinction. A Distinction* can be awarded for those aspiring learners who fulfil the exam boards criteria.

What can I do afterwards?

By studying for this certificate learners will acquire the knowledge to pursue careers or learning in the food industry. The qualification will support entry to higher education courses such as:

BSc Human Nutrition
BSc (Hons) Public Health Nutrition
BSc (Hons) Food Science and Technology



"The course has given me the knowledge to decide my future study and career path."

- FOOD SCIENCE STUDENT

HEALTH & SOCIAL CARE

Who is this qualification for?

The OCR Level 3 Cambridge Advanced National in Health and Social Care (Extended Certificate) is for students who want to develop knowledge, understanding and skills relevant to the health and social care sector. The qualification will help prepare students for undergraduate study or employment when taken alongside other qualifications. You might be interested to take this course alongside the Early Childhood Development Extended Certificate, and other Level 3 qualifications or A Levels.

You will have the opportunity to apply what you learn to real-life contexts, such as:

- Recommending support for individuals.
- Presenting advice and guidance.
- Communicating and building relationships.

The qualification will also help you develop independence and confidence in using skills that are relevant to the sector and that prepare you for progressing to university courses where independent study skills are needed. You will develop the following transferable skills that can be used in both higher education and other life and work situations:

- Communicating and collaborating effectively with individuals
- Creating and presenting/delivering information to an individual. • Independent learning, spending time outside of lessons completing research solve problems.
- Researching topic areas and recording research sources, then using them to interpret findings and present evidence.
- Recommending care and support for individuals.
- Presentation skills by presenting recommendations to others.
- Problem solving health and social care problems for others.

This qualification will complement other learning that you're completing at Key Stage 5. If you are a full-time student, it will be part of your studies along with your A Levels and/or other Level 3 qualifications

What you will study when you take this qualification

Through a combination of theoretical study and hands-on experience, you will develop the necessary knowledge and skills that can support progression to higher education health or social care study. In the examined units, you will study key knowledge and understanding relevant to health and social care. In the non examined assessment (NEA) units, you will demonstrate knowledge and skills you learn by completing applied or practical assignments.

The qualification has four mandatory units and two optional units. These are the mandatory units – you must take all these units:

- Principles of health and social care
- Anatomy and physiology for health and social care
- Person-centred approach to care
- Supporting people with mental health conditions

The optional units are chosen by the subject lead and will include two from the following list:

- Supporting people with long term physiological conditions
- Investigating public health
- Supporting people in relation to sexual health, pregnancy and postnatal health
- Supporting healthy nutrition and lifestyles

How will my work be assessed?

The course includes a range of assessment types and styles suited to vocational qualifications in the sector. There are three main forms of assessment that you need to be aware of: external, internal and synoptic.

Units are assessed using a grading scale of Distinction* (D*), Distinction (D), Merit (M), Pass (P), Near Pass (N) and Unclassified (U). All mandatory and optional units contribute proportionately to the overall qualification grade, with a cumulative grade awarded at the end of the course.

What can I do afterwards?

The types of courses you may progress to both the subject-specific knowledge, understanding and skills, and broader transferable skills developed through these units, will help you progress to further study in related areas such as:

- BSc Nursing (Adult/Child/Learning disabilities/ Mental health)
- BSc Midwifery
- BSc Health and social care
- BSc Healthcare and Health Science
- BSc Health Sciences
- BSc Paramedic Science
- BSc Public Health and Wellbeing
- BA Social Work

What qualifications do I need?

You will need at least 4 GCSEs at grade 4 or above.

"A great subject to open many doors to different careers."

- HEALTH & SOCIAL CARE STUDENT

EARLY CHILDHOOD DEVELOPMENT

Who is this qualification for?

The Pearson Level 3 Alternative Academic Qualification BTEC National in Early Childhood Development (Extended Certificate) is designed for post-16 students with an interest in Education and Early Years and aiming to progress to higher education as a route to graduate level employment. Equivalent to one A Level in size, it is suitable for students looking to develop their applied knowledge and skills in Education and Early Years as part of a study programme alongside our Health and Social Care Extended Certificate, and other Applied subjects or A Levels.

What does the course involve?

The Early Childhood Development Extended Certificate allows students to engage in a broad investigation of the children's care and education sector (0-8 years).

The qualification has been developed in consultation with higher education representatives and sector experts to ensure students have the knowledge, understanding and skills they need to progress to, and thrive in, higher education. The qualification has four mandatory units covering the following topics:

- **Children's development** – Children's developmental progress from birth up to eight years, including the theories, principles and factors relating to development, and the potential impact of a range of factors on a child's progress through the developmental milestones.
- **Keeping Children Safe** – Health and safety and safeguarding responsibilities of an individual working in an early years setting; emergency best practices and when to address concerns about a child's welfare.
- **Play and Learning** – The concept of play, the influence of theories and approaches to play, and the benefits of play and learning activities for children.
- **Research and Reflective Practice** – The influence of research findings on policy and provision for children and how this influences the behaviours and expectations of an individual working in an early years setting.

How will my work be assessed?

The course includes a range of assessment types and styles suited to vocational qualifications in the sector. There are three main forms of assessment that you need to be aware of: external, internal and synoptic.

Units are assessed using a grading scale of Distinction (D), Merit (M), Pass (P), Near Pass (N) and Unclassified (U). The grade of Near Pass is used for externally assessed units only. All mandatory and optional units contribute proportionately to the overall qualification grade, for example a unit of 120 GLH will contribute double that of a 60 GLH unit.

What can I do afterwards?

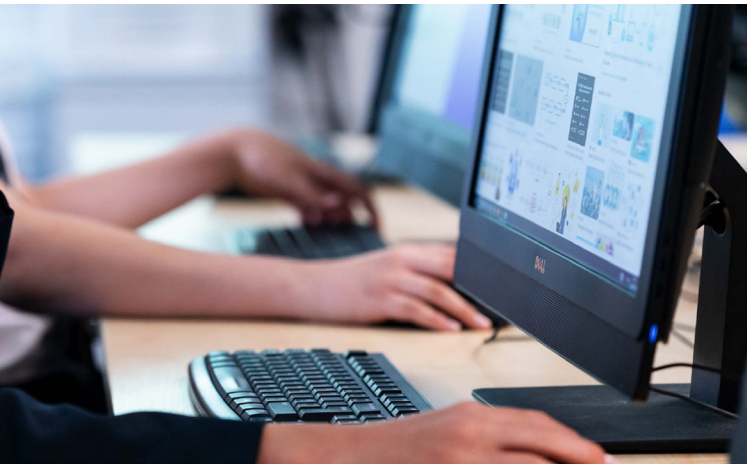
The Extended Certificate can gain progression to higher education or employment. Although a new course, many students who have followed similar courses have gone on to university degrees including:

- Nursing – BSc (Hons) Adult Nursing, Nursing – Child – BSc (Hons)
- Teacher Training – Childhood and Early Years Studies BA (Hons)
- Social Work – BA (Hons) Social Work
- Psychology – Psychology BSc (Hons)

What qualifications do I need?

You will need at least 4 GCSEs at grade 4 or above.

INFORMATION TECHNOLOGY



Who is this qualification for?

The Level 3 Cambridge Advanced National in IT: Data Analytics (Extended Certificate) is an Alternative Academic Qualification (AAQ) designed for post-16 students with an interest in the Digital sector and aiming to progress to higher education or employment. Equivalent to one A Level in size, it is suitable for students looking to develop their applied knowledge and skills in Information Technology as part of a study programme alongside A Levels and/or other Level 3 courses, such as Business.

What does the course involve?*

The qualification has been developed to ensure students have the knowledge, understanding and skills they need to progress to, and thrive, in higher education or employment. The qualification has three mandatory units and two optional units. The mandatory units are

- **Fundamentals of data analytics** - In this unit you will learn about the fundamental knowledge required for a career working in data-related occupations.
- **Big data and machine learning** - In this unit you will learn about the challenges of managing big data and the role of artificial intelligence and machine learning in data science.
- **Spreadsheet data modelling** - In this unit you will learn the principles of data modelling with spreadsheets and the knowledge and skills required to plan, design, create, test and review a spreadsheet modelling solution that meets the needs of a specific client.

The optional units are chosen by the subject lead and include:

- Relational database design
- Data and the Internet of Everything (IoE)
- Data visualisation
- Data and digital marketing

Please note this specification may be subject to change*

How will my work be assessed?

The course includes a range of assessment types and styles. There are three main forms of assessment that you need to be aware of: external (exam), internal (assignments) and synoptic (practical application).

Synoptic assessment requires students to demonstrate that they can identify and use effectively, an appropriate selection of skills, techniques, concepts, theories and knowledge from across the subject as relevant to a key task.

Units are assessed using a grading scale of Distinction* (D*), Distinction (D), Merit (M), Pass (P), Near Pass (N) and Unclassified (U).

What can I do afterwards?

The Extended Certificate can gain progression to higher education or employment. Although a new course, many students who have followed similar courses have gone on to university degrees including:

- Business Studies
- Information Systems
- Computer Science

What qualifications do I need?

You will need at least 4 GCSEs at grade 4 or above.

RSL SUBSIDIARY DIPLOMA

MUSIC TECHNOLOGY

Is this course for me?

If you have an interest in the technology side of music – such as the recording studio, live sound and creating music on computers – then this is the course for you. There are no formal exams on this course. There are elements of performing music on the course, however, the emphasis is on using technology to capture, create, edit and manipulate sounds. There is also a unit of work that's sole purpose is to inform you of careers in the music industry and how to further your skillset to enable you to have a career in the industry.

What qualifications do I need?

You will need at least 4 GCSEs at grade 4 or above including a grade 5 or above in GCSE music. However, if you have not done GCSE Music and are interested in the course, it is essential that you contact the course tutor before signing up.

What does the course involve?

Digital Recording and Production

This unit has two aims:

- To develop skills in effectively planning the recording process and recording instruments and voices.
- To edit audio samples for future use.

The purpose of this unit is to enable the students to record instruments and or vocals in the studio, and manipulate and edit them to be sample patches for future projects. This involves learning the controls and functions of the recording studio as well as computer software. The unit also focuses on the ability to plan and manage the recording process.

Music Sequencing and Production

The aim of this unit is to develop skills in using music sequencing software. The digital Audio Workstation Cubase gives ultimate control to users to create synthesized sounds as well as programming pre-recorded samples. MIDI editing and functions are also a large part of this unit. The purpose of this unit is to enhance the learner's ability to utilise the advanced functions of a sequencing package (Cubase) and put them into practice.

Live Music Performance

The aim of this unit is to refine live performance skills and to develop the students' capacity to take ownership of the entire performance process, in context, from a personal perspective. This will involve planning and executing rehearsals and performance opportunities, as well as gaining an understanding of image, stage persona and communication with both audience and band members.

Live Sound Recording and Sound Reinforcement

(Externally Assessed Unit)

Exact details of this unit of work are released by the exam board shortly before delivery, however, from previous briefs set by RSL, the purpose of the unit is to enable students to:

- Plan a live recording of a piece of music.
- Set up a performance-level PA system for a live music event.
- Create a live recording of a piece of music.
- Evaluate the success of the installation of sound reinforcement equipment and the completed recording.

How will my work be assessed?

There are no formal exams on this course. Units of work are marked by the subject teachers, with the opportunity for students to re-submit work after receiving feedback from teachers. There is an exception of one unit which is sent to RSL (the exam board) to mark. This unit has a set amount of time dedicated to it in the school calendar, and the brief is released by RSL shortly before delivery.

What can I do afterwards?

This is a very rewarding course that would lead on to further studies down the music technology route. An entire unit of work is dedicated to getting work in the industry and this may help inform your career choice and your chosen pathway to succeed.

OCR TECHNICAL

SPORT & PHYSICAL ACTIVITY

Is this course for me?

This qualification is not just about being able to play sport or deal with elite athletes; employers need people who are able to lead sports and physical activities safely, work with the general public in providing sport and physical activity opportunities and help to promote physically active lifestyles. Therefore, this qualification will provide learners with the skills, knowledge and understanding to progress into employment in the sport and physical activity sector either through an apprenticeship or directly into work.

What qualifications do I need?

You will need at least 4 GCSEs at grade 4 or above including a Merit in BTEC Level 2 Sport or a 6 in GCSE PE, and a minimum of a 4 in English.

What does the course involve?

Learners will take 11 units, made up of mandatory and optional units across two years. Everybody will study the following mandatory units:

- Body systems and the effects of physical activity
- Sports coaching and activity leadership
- Sports organisation and development
- Working safely in sport, exercise, health and leisure
- Physical activity for specific groups

These units will give learners the skills, knowledge and understanding related to key aspects which underpin how sport and physical activity is delivered and organised, such as anatomy and physiology in relation to physical performance, coaching skills, the structure of sport in the UK and the organisations involved, the target groups that would most benefit from participation in physical activity and safe practice in sport and leisure. Learners will also develop transferable skills that employers are looking for such as planning, communication, adaptability and leadership.

How will my work be assessed?

Externally Assessed - These units are available as timetabled examinations. We set the dates.

Internally Assessed - These units are assessed through coursework, presentations and observations.

What can I do afterwards?

This qualification can lead to Advanced Level apprenticeships in Coaching, Leisure Management and Exercise and Fitness or to job roles such as Fitness Instructor, Activity Leader or a Leisure/Recreation Assistant. It could also provide a route into Higher Education on a sport-related programme such as Sport and Physical Education, Sport Science, Sport Coaching and Development or Sport and Leisure Management.



"This course offers a lot of different areas of the sport industry which I was very keen on learning about. I would like a career in sport and this course has given me insight on the huge range of opportunities available within the industry."

- SPORT STUDENT

TRAVEL & TOURISM EXTENDED CERTIFICATE

Is this course for me?

This course will appeal to you if you have an interest in working in the Travel industry in a number of different areas including Cabin Crew, Overseas Rep and as a Tour Operator. It is a 2 year course and carries the equivalent UCAS points of an A level.

This is an applied Level 3 course which will provide a strong academic background whilst allowing you to develop skills that will prepare you for both the world of work, and the demands of Higher Education courses.

What qualifications do I need?

You will need at least 4 GCSEs at grade 4 or above.

What does the course involve?

The course is broken into 4 units of work across the two years of study.

Units:

- The World of Travel & Tourism
- Global Destinations
- Principle of Marketing in Travel & Tourism
- Visitor Attractions

How will my work be assessed?

There will be some examination elements to the assessment of this course. Students will also be assessed through the following:

- Practical reports
- Portfolio of work
- Presentations

There will be several opportunities for organised college trips as part of the course to destinations such as the Eden Project, Plymouth and London.

What can I do afterwards?

The practical nature of this course allows you to pursue a career in the Travel and Tourism or customer based industries. The course is also excellent preparation for one of the many Higher Education courses available in this subject. Students who study Travel and Tourism go on to work in many areas including Travel and Tourism management, retail, tour operations and the transport industries.

"Travel & Tourism has been my favourite course I have studied whilst at Helston Community College. My teachers have been outstanding in the delivery of content. The course has allowed me to gain a deep understanding into the Travel & Tourism industry, particularly the Visitor Attractions unit. Because I have enjoyed the course so much, I am going to go onto further study Visitor Attractions within the tourism industry at degree level."

- TRAVEL & TOURISM STUDENT

NATIONAL DIPLOMA

MEDICAL SCIENCE

Is this course for me?

The Level 3 Diploma in Medical Science is ideal for post-16 students who are interested in careers related to healthcare and medical research. It is an Applied General qualification and is a 2 year course that carries the equivalent UCAS points of one A level. Medical scientists are at the forefront of healthcare services, they are vital in the diagnosis of disease, determining the effectiveness of treatments and searching for new cures.

What qualifications do I need?

You will need at least 4 GCSEs at grade 4 or above including science, maths and English.

What does the course involve?

The qualification covers the key topic areas of health, physiology and disease, as well as providing the opportunity to study the areas of pharmacology, physiological measurement, clinical testing and medical research.

In order to achieve the Level 3 Diploma in Medical Science learners are required to complete 6 units:

1. Human health and disease
2. Physiological measurement techniques
3. Medical Science research methods
4. Medicines and treatment of disease
5. Clinical laboratory techniques
6. Medical case study

Each unit has a clear medical science purpose which focuses the learning of scientific knowledge, understanding and skills into a meaningful context.

How will my work be assessed?

WJEC Level 3 Diploma in Medical Science is assessed using a combination of internal and external assessment. There are a range of assessment activities involving traditional examinations, task based activities and controlled assignment based assessments.

Unit: Human health and disease. Detail: 2 hour synoptic written examination on Units 1 - 3.

Unit: Physiological measurement techniques. Detail: assignment based.

Unit: Medical Science research methods. Detail: assignment based.

Unit: Medicines and treatment of disease. Detail: assignment based.

Unit: Clinical laboratory techniques. Detail: task based assignment.

Unit: Medical case study. Detail: 2 hour synoptic written examination on Units 1 - 6.

What other subjects could I study alongside this one?

Studying the level 3 Diploma in Medical Science allows time in the curriculum for other qualifications to be studied alongside it, as the course only fills one option block. These would typically be A levels such as psychology or chemistry or another applied general qualification in an area such as health and social care.

What can I do afterwards?

A significant proportion of career opportunities in this sector are at degree level. When supported by other appropriate qualifications, the Level 3 Diploma in Medical Science will enable progression to higher education to a range of Applied Science programmes, such as biomedical science, life sciences, and physiology.

The level 3 Diploma in Medical Science is supported by a number of Higher Education Institutions including: Bangor University, Bristol University of the West of England, Cardiff Metropolitan University, Swansea University, University of Chester.

This qualification also equips learners with scientific knowledge and understanding, as well as practical skills that would support progression to a range of job roles within healthcare. Job roles such as those within the areas of life sciences, i.e. carrying out a range of laboratory and scientific tests to support the diagnosis and treatment of disease. Alternatively, there would also be opportunities to progress to job roles within the physiological sciences, working directly with patients, measuring and evaluating particular organs and systems.

LEVEL 1 & 2 COURSES

The Level 1 and 2 courses are designed to equip students who follow a vocational programme with the skills and qualifications to progress to an apprenticeship or employment. It has been developed in partnership with local employers and training providers with the aim of providing students with the qualifications needed and experience valued to ensure that they have the best possible opportunities to secure the next step in their careers. Students will need to take a range of courses including:

- A vocational qualification which is specific to the option pathway
- A numeracy and literacy qualification (if needed)
- Employability skills
- Work experience placement

Students who take the level 1 and 2 route will also be prepared for when they progress to employment / apprenticeships through the College Apprenticeship Day, CV writing workshops, and personal effectiveness.



CONSTRUCTION DIPLOMA

Is this course for me?

The Diploma has been specifically developed for delivery in a training environment using simulated conditions. The award is broken into separate routes eg:

- Building Technology & Sustainability
- Health & Safety
- Bricklaying
- Floor covering
- Plastering
- Roofing
- Setting Out
- Blocklaying

What qualifications do I need?

No qualifications are required but candidates are expected to be enthusiastic about training for this skill shortage area. A certain amount of fitness is necessary.

I recommend to everyone, its great to learn a trade in this skills shortage area.

- CONSTRUCTION STUDENT

What does the course involve?

Each Diploma route comprises:

- Core units
- Occupation specific units
- Work experience and Key Skills

The occupation specific units are based on skills and are tested by observation.

How will my work be assessed?

To gain the award candidates have to be successful in all units, but each unit is accredited on a separate basis. Candidates will also pass a health and safety test. Work based evidence from work experience (witness statements and work diaries).

What can I do afterwards?

An important feature of the Diploma is that it provides a progression route towards achieving a National Vocational Qualification (NVQ) at Level 2 and Level 3 or employment in this skill shortage area.



ENGLISH GCSE RESIT

Is this course for me?

If you have not obtained a Grade 4 in GCSE English, then you will need to follow a GCSE re-sit or Literacy course as part of your Post 16 studies. English is considered essential by universities, most employers and apprenticeship providers. New legislation requires post-16 students to keep taking GCSE English and maths until you get a grade 4. If you do not have the grade, you will find a lot of course and career opportunities closed to you.

What qualifications do I need?

You should, ideally, have a 3 at GCSE and be willing to work hard.

What does the course involve?

Preparation and practice for two examinations:

Paper 1: Explorations in creative reading and writing.

Section A: Reading and responding to a fiction extract.

Section B: Writing to narrate or describe.

Paper 2: Writers' view points and perspectives

Section A: Reading and responding to two non-fiction extract.

Section B: Writing to argue or persuade

How will my work be assessed?

The GCSE is assessed externally by examinations. There is no coursework element.

What can I do afterwards?

A grade 4 in English is an essential requirement for entry to a great number of jobs, as well as Higher Education courses and apprenticeship providers.



MATHS GCSE RESIT

Is this course for me?

Apprenticeship providers and most employers require a good grade in GCSE mathematics (4 and above) or equivalent. Therefore, if you have not already gained your maths at GCSE grade 4, you will need to take either the Functional Skills or GCSE Maths option.

What qualifications do I need?

GCSE mathematics grade 2. If you have a grade 1 in GCSE Maths, then you would be advised to take the Functional Skills in Numeracy as an alternative to the GCSE.

What does the course involve?

This is a one-year course, involving class lessons supported by a significant amount of individual learning.

How will my work be assessed?

There are three final written exam papers, each lasting 1 hour 30 minutes (a non-calculator and two calculator papers). While this course is designed to be a one-year improvement course, if ready, students are encouraged to take the examinations at the earliest opportunity in November.

What can I do afterwards?

A good grade in GCSE Mathematics will enable you to apply for apprenticeships and strengthen your CV for future employment.



ENRICHMENT PROGRAMME

The enrichment programme is strongly encouraged for all students joining post 16. It is an opportunity for students to participate in activities in and beyond the classroom. Enrichment is for 70 minutes each week, with students choosing from different activities across the year. We encourage students to take risks and choose an activity which is out of their comfort zone. The programme is designed to prepare students for what is to come at university, employment and beyond, to give them life skills, as well as academic ones.

There are a range of activities that students can choose, including a variety of sports and creative arts, as well as the Duke of Edinburgh Silver and Gold Awards. The college also works closely with Falmouth University if students wish to further their interest in the creative arts. Alternatively, for those who wish to try something new, there are options such as academic coaching. Aspiring teachers can become Student Leaders and help out in classes lower in the college, or students can take an extended work placement in the local area to develop work related skills or perhaps experience a specific career. Also available is a selection of sports, including the opportunity to play for some of the successful college teams.

The choice of activities differs slightly each year with students given the opportunity to suggest what they would like as part of the programme. The skills students will develop from participating in the enrichment programme include communication, independent learning, teamwork and problem solving, all of which are vital in applying for further studies or the world of work.



EXTENDED PROJECT QUALIFICATION

Is this course for me?

The Level 3 Extended Project aims to support learners with the transition to Higher Education or into the world of work. It provides opportunities for the development of critical, reflective, problem-solving and independent learning skills through the planning, research and evaluation of a self-selected project. Students who study the EPQ would normally do so in addition to their A level subjects.

What qualifications do I need?

Students studying this qualification must have a 4 or above in Maths and English and a further 3 GCSEs at a minimum grade 4, especially if you are planning to go on to higher education.

What does the course involve?

Throughout their in-depth study, learners will develop and apply skills creatively, resulting in one of the four following project outcomes:

- An extended project
- An investigation report
- A performance
- An artefact

Learners have the opportunity to choose their own field of study and will be guided by a Project Supervisor.

The skills required to complete the project will be taught through the study skills programme and through tailored lessons throughout the project. The Extended Project is equivalent to an Advanced Subsidiary (AS) qualification and is graded A* to E and requires 120 Guided Learning Hours. It attracts the UCAS points ranging from 8 to 28, depending on the grade of the final project.

How will my work be assessed?

The EPQ is internally assessed, followed by external moderation. The assessment includes a log book and a presentation of the final work.

What can I do afterwards?

The EPQ is valued highly by both universities and employers. Oxford University state on their website that the EPQ provides an applicant with the opportunity to develop research and academic skills relevant for study at university. Students are encouraged to draw upon relevant EPQ experience when writing their UCAS application.



"I took the EPQ because the time management and essay writing skills the qualification develops are crucial for studying at university; it also enabled me to look further into topics outside of my A levels, giving me the opportunity to learn about what I specifically wanted to."

- EPQ STUDENT

POST 16 APPLICATION FORM

This form should be completed by the student and returned to Mrs Jane Rowe, our Post 16 administrator. An electronic copy of this form is also available on the College website. If you would prefer to use email, the relevant address is: jrowe@helston.tpacademytrust.org

If returning by post, please address to:

Mrs Jane Rowe,
Helston Community College
Church Hill, Helston
Cornwall TR13 8NR

First name. _____

Middle name(s). _____

Surname. _____

Address.

Date of birth. _____

Current school.

Please write up to 5 courses
which you would like to follow
in September:

1. _____
2. _____
3. _____
4. _____
5. _____

Student signature.

Date. _____



APPLY ONLINE

Scan the QR code above with your smartphone camera to be instantly taken to our online application form, whereby you can fill out all the necessary details and submit directly to us.

Can't scan? Simply visit...

www.helston.ac.uk

HOW TO FIND US

ROAD

Approaching Helston from Truro/Falmouth
Arriving on the A394, turn right onto the Redruth Road; then take the second left into the Water-ma-Trout industrial park; then take the first left onto Church Hill.

Approaching Helston from Redruth:
Arriving on the B3297, turn right into the Water-ma-Trout Industrial Park; then take the first left on to Church Hill.

Approaching Helston from Penzance:
Follow the one way system through town; at the end, turn left into Station Road; turn right into Church Hill for the North Site reception.

RAIL

The nearest rail/bus link is via Redruth Station.

BUS ROUTES

There are frequent bus services from Penzance, Falmouth and Redruth.

AIR

The nearest airport is Newquay.



Helston Community College

2025-26

Post 16

Helston Community College
Church Hill, Helston
Cornwall TR13 8NR

Tel. 01326 575022

post16@helston.tpacademytrust.org
www.helston.cornwall.sch.uk