



Transition - Ordering Uniform and PE Kit

Uniform orders must be placed by midday on **Saturday 20th June 2020**

Order uniform here:

<https://forms.gle/An9PgcRwDcFTjYXA8>

Paper copies of this form will be available from Monday 25th May in North Site Reception for those who do not have access to the internet. Once you have completed a paper form, please post it to: **FAO Ms T Graham, Helston Community College, Church Hill, Helston, TR13 8NR.**

Uniform Prices:

Blazer and badge £23.50

Available sizes include: 28", 29", 30", 31", 32", 33", 34", 35", 36", 37", 38", 39", 40", 41", 42", 43", 44", 45", 46".

How to measure for a blazer

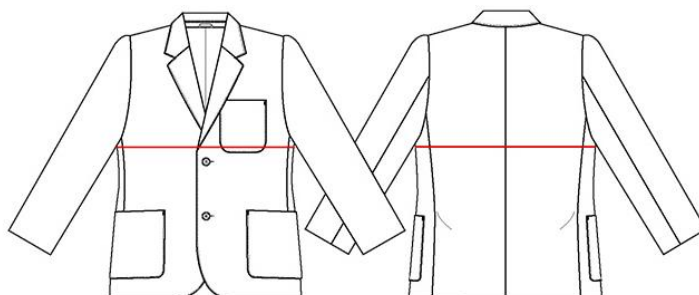
In normal circumstances, we would be offering a chance to try on blazers before ordering. This would happen at the Transition Parents' Information Evening. In current circumstances, we are unable to offer this service.

Before ordering, we recommend that you measure your child for their blazer.

Using a tape measure:

- Ensure that your child's arms are down by their side.
- Measure the chest at the fullest part (see diagram), placing the tape under the arms and ensuring that the tape stays level.
- Please ensure that the tape is not too tight – you should be able to easily place a finger underneath the tape.
- Please note that blazer measurements are in inches.

As a guide, the most popular size for boys is 30" and for girls is 34".



Tie £4.70

Badge only £2.50

For if you are sourcing your own blazer.

Order PE Kit here:

<https://shop.agamesports.co.uk/collections/helston-community-college>



The Complete Uniform List

BOYS UNIFORM

- Navy blue school blazer with a cloth College badge
- Light blue shirt (white for Years 10 & 11)
- Clip-on College tie
- Navy blue v-neck jumper (optional)
- Black school trousers (these should fall freely from the knee and not cling to the lower leg; jean or cargo style not permitted)
- Black socks
- Black leather or polished school shoes (not suede and if laced, with black laces. No labels or markings.)

PE KIT

- College rugby shirt
- Navy blue shorts
- Navy blue football socks
- Trainers
- Football/rugby boots
- Towel
- Swimming shorts

Optional Extras:

- College navy blue hoody
- Navy blue or white baselayer
- Navy blue tracksuit bottoms

Recommended:

- Shin pads and gum shield

GIRLS UNIFORM

- Navy blue school blazer with a cloth College badge (not fashion equivalent)
- Light blue shirt (white for Years 10 & 11)
- Clip-on College tie
- Navy blue v-neck jumper (optional)
- Black school trousers (these should fall freely from the knee and not cling to the lower leg; jean/legging style trousers are not permitted)
- Or black tailored skirt (no more than 2cm above the knee - tube style skirts are not permitted)
- Black leather or polished school shoes (not suede and if laced, with black laces. No labels or markings. Boots not permitted)
- Black socks or tights

PE KIT

- College navy blue polo shirt
- Navy blue 'skort'
- Navy blue socks
- Trainers
- Towel
- Swimming costume

Optional Extras:

- College navy blue hoody
- Navy blue or white base layer
- Navy blue tracksuit bottoms

Recommended:

- Shin pads and gum shield

DRAMA

Students need to be either barefoot or bring soft clean shoes such as pumps, ballet/jazz shoes or soft trainers with a gripping sole to avoid slipping during practical activities. Failure to do so will result in not being able to take part in practical work. This is for their safety and the safety of others in the studio.

