

UNIFORM ORDERS

Order and pay through our NEW online College Shop:

<https://app.parentpay.com/ParentPayShop/Uniform/Default.aspx?shopid=1120>

Please note:

- You will need to scroll to the very bottom of the page to locate uniform.
- Once you have selected your purchases, click on the shopping trolley icon in the top right-hand corner.
- In the 'child details' section, please enter your child's full name.

HCC Blazer with badge

Available blazer sizes include: 28", 30", 32", 34", 36", 38", 40", 42", 44", 46".

How to measure for a blazer

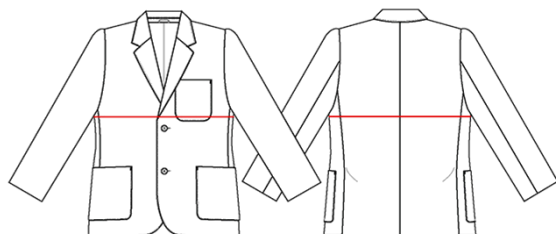
In normal circumstances, we would be offering a chance to try on blazers before ordering. In current circumstances, we are unable to offer this service.

Before ordering, we recommend that you measure your child for their blazer.

Using a tape measure:

- Ensure that your child's arms are down by their side.
- Measure the chest at the fullest part (see diagram), placing the tape under the arms and ensuring that the tape stays level.
- Please ensure that the tape is not too tight – you should be able to easily place a finger underneath the tape.
- Please note that blazer measurements are in inches.

As a guide, the most popular size for Year 7 boys is 30" and for Year 7 girls is 34".



We keep a number of spare sizes at the College so you will be able to exchange your child's blazer if the fit is not right.

Blazer with badge 24" - 36"	Blazer with badge 38" - 42"	Blazer with badge 44"-50"	Tie	Badge Only [if sourcing own blazer]
£25.50	£26.50	£27.50	£4.70	£1.30

Order PE Kit here: <https://shop.agamesports.co.uk/collections/helston-community-college>

Collecting your order

Uniform orders can be delivered to your home address or collected from Helston Community College's North Site Reception.

If you have any questions regarding uniform, please email: uniform@helston.cornwall.sch.uk.

FULL UNIFORM LIST

BOYS UNIFORM

- ✓ Navy blue school blazer with a cloth College badge
- ✓ Light blue shirt (white for Years 10 & 11)
- ✓ Clip-on College tie
- ✓ Navy blue v-neck jumper (optional)
- ✓ Black school trousers (these should fall freely from the knee and not cling to the lower leg; jean or cargo style not permitted)
- ✓ Black socks
- ✓ Black leather or polished school shoes (not suede and if laced, with black laces. No labels or markings.)

PE KIT

- ✓ College rugby shirt
- ✓ Navy blue shorts
- ✓ Navy blue football socks
- ✓ Trainers
- ✓ Football/rugby boots
- ✓ Towel
- ✓ Swimming shorts

Optional Extras:

- ✓ College navy blue hoody
- ✓ Navy blue or white base layer
- ✓ Navy blue tracksuit bottoms

Recommended:

- ✓ Shin pads and gum shield

GIRLS UNIFORM

- ✓ Navy blue school blazer with a cloth College badge (not fashion equivalent)
- ✓ Light blue shirt (white for Years 10 & 11)
- ✓ Clip-on College tie
- ✓ Navy blue v-neck jumper (optional)
- ✓ Black school trousers (these should fall freely from the knee and not cling to the lower leg; jean/legging style trousers are not permitted)
- ✓ Or black tailored skirt (no more than 2cm above the knee - tube style skirts are not permitted)
- ✓ Black leather or polished school shoes (not suede and if laced, with black laces. No labels or markings. Boots not permitted)
- ✓ Black socks or tights

PE KIT

- ✓ College navy blue polo shirt
- ✓ Navy blue 'skort'
- ✓ Navy blue socks
- ✓ Trainers
- ✓ Towel
- ✓ Swimming costume

Optional Extras:

- ✓ College navy blue hoody
- ✓ Navy blue or white base layer
- ✓ Navy blue tracksuit bottoms

Recommended:

- ✓ Shin pads and gum shield

DRAMA NOTICE

Students need to be either barefoot or bring soft clean shoes such as pumps, ballet/jazz shoes or soft trainers with a gripping sole to avoid slipping during practical activities. Failure to do so will result in not being able to take part in practical work. This is for their safety and the safety of others in the studio.

SOURCING ALTERNATIVES

We appreciate that uniform can be a large financial outlay. If you are sourcing your own navy blue blazer, you can purchase the school badge only for £1.30.

Similarly, for PE, students can alternatively wear navy tracksuit bottoms or navy leggings (but leggings must be worn with shorts or a skort) and a navy t-shirt and/or plain navy hoody.